

YirehMex Athangudi tiles



**Elevate Your
Space with Our
Quality Tiles!**

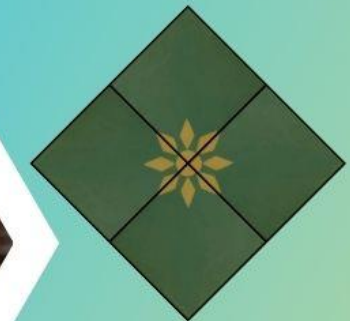
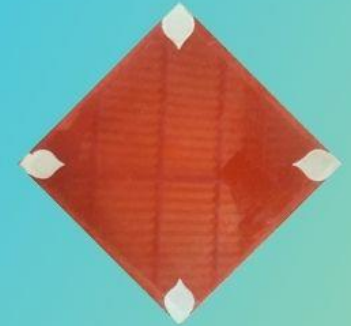
**Explore our wide range of
Durable, Eco and Stylish tiles
for every room.**

Contact Us

433, Mahalaksmi nagar, Athangudi
road, Chockalingampudur. Karaikudi
taluk, Tamilnadu, India - Pin 630101
+91-9080581547
yirehmex@gmail.com
www.yirehmex.com

About US

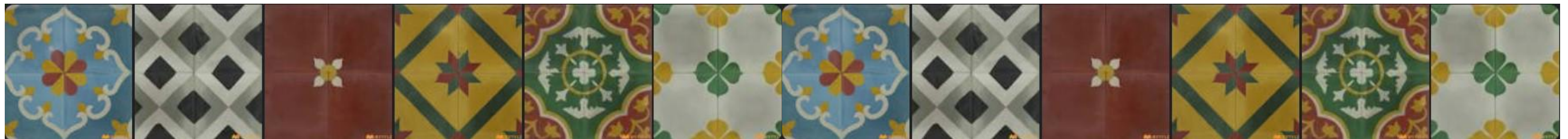
**YirehMex-
Manufacturing and
selling of Athangudi
Tiles**





HANDCRAFTED HERITAGE ATHANGUDI TILES

A COLLECTION OF THE FINEST SELECTION OF HANDCRAFTED ECO-FRIENDLY RENAISSANCE.





THE MAGIC OF ATHANGUDI HANDCRAFTED TILES



WHAT IS THE MAGIC ELEMENT?

Athangudi tiles are 100% handcrafted, and really incorporate the concept of Victorian tiles in them. Athangudi tiles are not fired; there is glass layer on the surface of the tile for shiny and it will be removed before shipping.

They derive their durability from the combination of finely dehydrated ground Portland cement layer and a coarser layer of sand and cement.

THE MAKING OF AN ARTISANAL PRODUCT

Athangudi tiles are made by hand, one at a time, using mineral pigments. The pigment layer is manually pressed into the surface and becomes a part of the tile.

The Brass metal mold is handmade following specific design drawings. After the tile is cast by the artisan, it must be cured in water for a period, and then air dried before being shipped. It is for this reason that Athangudi tiles have a longer delivery period than ceramic tiles, but they have an extremely long life.

WHAT MAKES OUR TILES STANDOUT ?

Our tiles are neither printed nor painted. colour oxide, sand, cement materials are hand-poured into divider molds to create these patterns.

WHY ARE NO TWO TILES THE SAME?

Because of the traditional processes involved with the production of these tiles, slight variations such as small edge splinters, colour bleeding/smudging between elements of the pattern and surface scratches are inevitable. this is perfectly normal.

It is precisely these imperfections which give these tiles their distinct charm and natural appeal.

WHAT ARE THE BENEFITS OF USING ATHANGUDI TILES?

Athangudi tiles has medic nature. balancing the weather's affects and prevent leg pain. Cement is incredibly durable. Floors can last up to 60 to 70 years if used and maintained properly.

In addition to this, the tiles can be re - polished several times during their life and will look as good as new each time this is done. Cement floors can take a lot of wear and tear and are perfect for high traffic areas.

YIREHMEX OFFERS YOU A RANGE OF COLOURS

Our tiles are available in a vast variety of colours which can be combined and paired to create beautiful results.

WHY ARE THE JOINT LINES VISIBLE ONCE THE TILES ARE LAID?

Tiles are laid very close to each other. Since the joint lines are very fine, it is difficult for the grouting material to stay inside.

WHAT IS THE TILE POROSITY

Cement tiles have porosity like natural stones. They are not recommended for areas where there will be spillage of oil or masalas. In bathrooms, they should preferably be used in dry areas and walls.

ARE THE ATHANGUDI TILES SUITABLE FOR OUTDOOR USE?

If the tiles are used outdoors, they will get a weathered appearance and the polish does not remain. The recommended use of these tiles is indoors.

CARE AND MAINTENANCE

Avoid using harsh chemicals, phenyl etc. Just use warm water with little coconut oil, and most importantly, change the water often during the mopping process. This will keep the tiles clean and indeed, will ensure your tiles gleam more and more over the years.

INSTALLATION BY SKILLED TEAM

Always have your floor installed by our skilled team, the team as they would know all the steps to be taken to produce an outstanding floor. Getting the tiles laid by a unskilled team will ruin the tiles. We will take no responsibility for tiles fixed by a non-certified unskilled team.

DIMENSIONAL TOLERANCES

As a characteristic of cement tiles, there will be slight dimensional variations both in thickness and right angles. These have to be adjusted during the laying of tiles by using cement mortar mix instead of adhesive, and also by the skill of the mason in adjusting the pattern to fit properly.

YIREHMEX PROCESS



01

BLENDING

The pigment composition is a mixture of high-quality cement, Athangudi sand and natural mineral colour pigments. The ingredients are blended together carefully over a period of half hours to produce the final colours.

02

MOLDING

The colours are filled with hand into a Brass metal mold which is on the glass surface. The metal mold, containing the desired pattern is handmade from specific design drawings. Handmade cement tiles are unique and are expected to have slight imperfections, which give them character and depth.

03

COMPRESSING

A cork in the form of a strong metal plate is applied at the top of the mold and the tile is pressed using a manual press. The pressure applied is up to full strength, which produces a compact tile

04

HARDENING

After pressing, the tiles are removed from the mold and placed on a rack until they harden enough to be moved into a tank of water.

05

HYDROLYSIS

The tiles are cured in water for several days, and not touched during which they undergo a hydrolysis process and harden into strong concrete.

06

DRYING & GRINDING

They are then removed from the tank and allowed to further cure and dry in the air. and removed the glass from the surface and then grind the edges of tiles for slightly excessive dried cement mortar. After that fully ready to be shipped to the customers.



THE YIREHMEX STORY

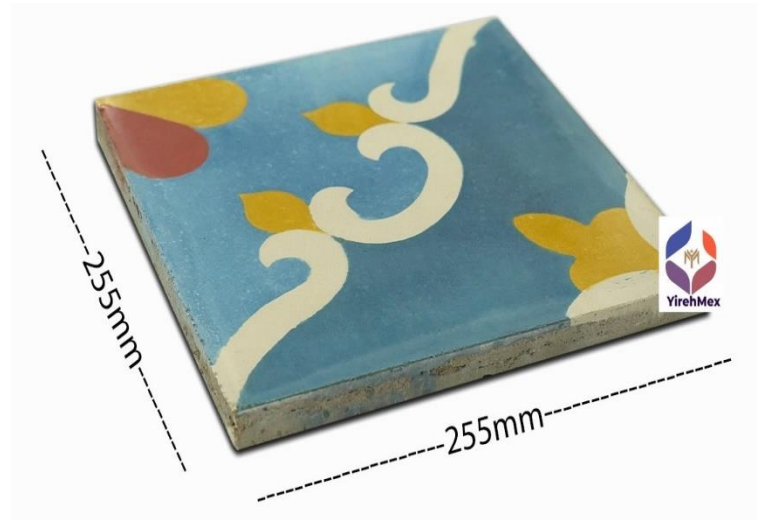
2023

Our company name, YIREH, is taken from Genesis 22:14 in the Bible and means "The LORD our provider."

The Durai brothers used of their resources to construct a tile factory next to Athangudi Road in Chockalingampudur. In 2023, the YirehMex Athangudi Tile Company was established. Chockanenthal is another name for Chockalingampudur, a locality near Karaikudi.



TECHNICAL SPECIFICATIONS



255 mm x 255mm (10" x 10")



18 mm Thickness



255 mm x 127 mm (10" x 05")



18 mm Thickness

Materials	Cement, Sand and Colour oxide
Tile size	255mmx255mmx18mm
Border / Skirting Tile size	255mmx127mmx18mm
Coating thickness	4- 5 mm
Bottom thickness	14-13 mm
Water Absorption	8.4 %
Breaking Bending Load	507N
Abrasion Resistance	2.3mm

YIREHMEX ATHANGUDI PLAIN TILES.



CONTACT US 908058 1547

There may be some variation in the colours of the actual product.
Tiles are handmade, shade variation can be expected.

COLOURS



COLOURS



There may be some variation in the colours of the actual product.
Tiles are handmade, shade variation can be expected.

YIREHMEX ATHANGUDI TRADITIONAL TILES



REF YAT



YAT STAMP



YAT-001-A



YAT-001-B



YAT-001-C



YAT-001-D



YAT-001-E



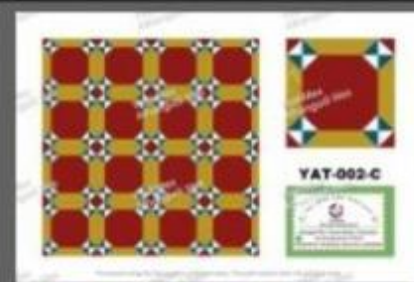
YAT-001-F



YAT-002-A



YAT-002-B



YAT-002-C



YAT-002-D



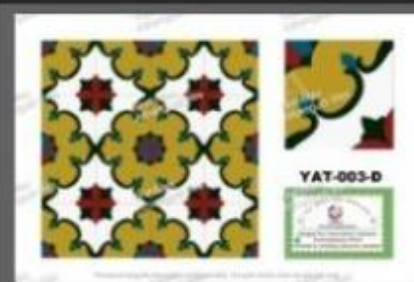
YAT-003-A



YAT-003-B



YAT-003-C



YAT-003-D



YAT-004-A



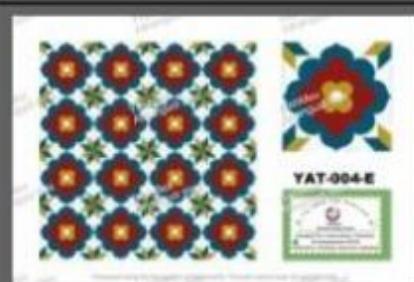
YAT-004-B



YAT-004-C



YAT-004-D



YAT-004-E



YAT-005-A



YAT-005-B



YAT-005-C

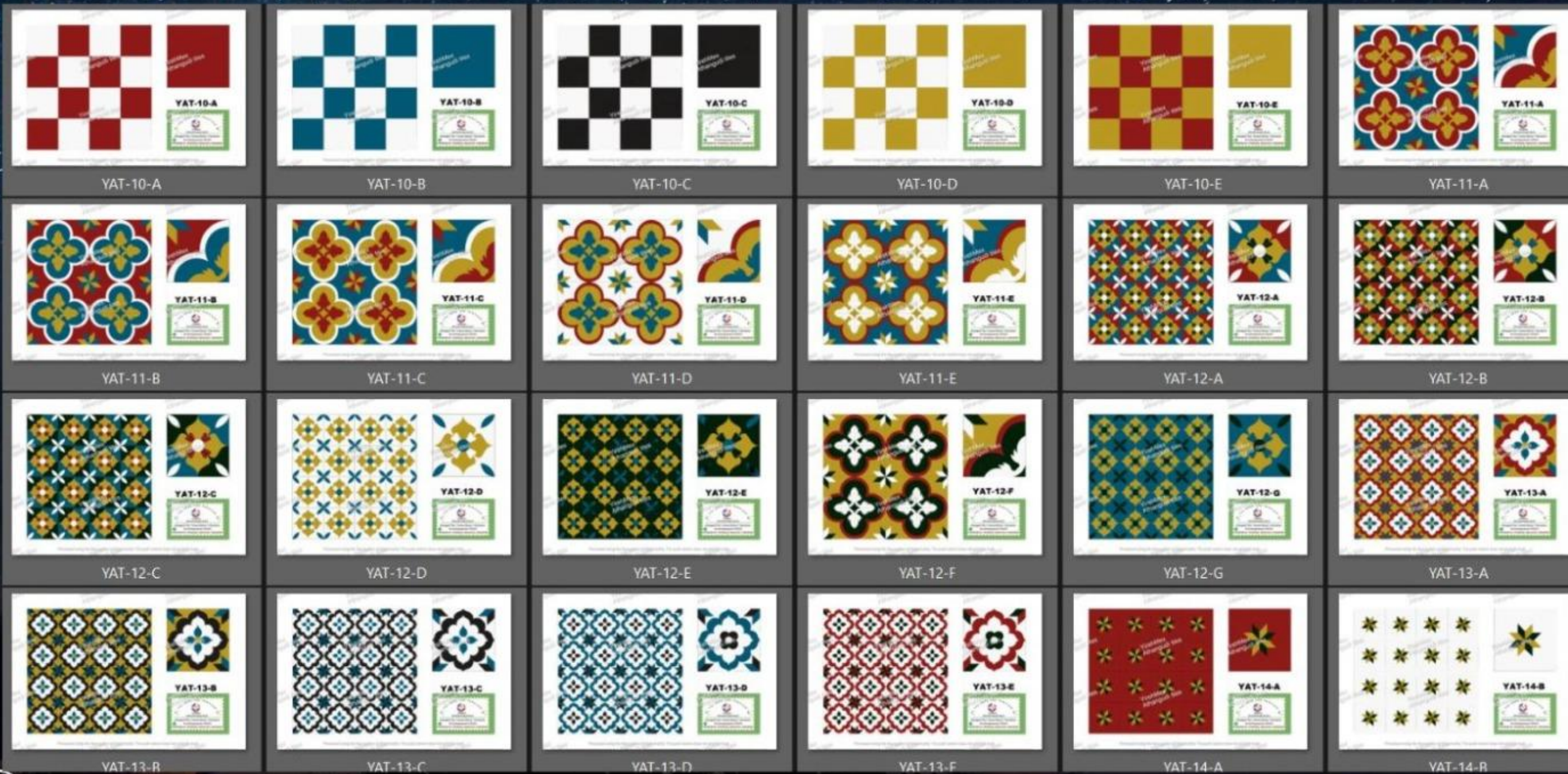
CONTACT US 9080581547

YIREHMEX ATHANGUDI TRADITIONAL TILES



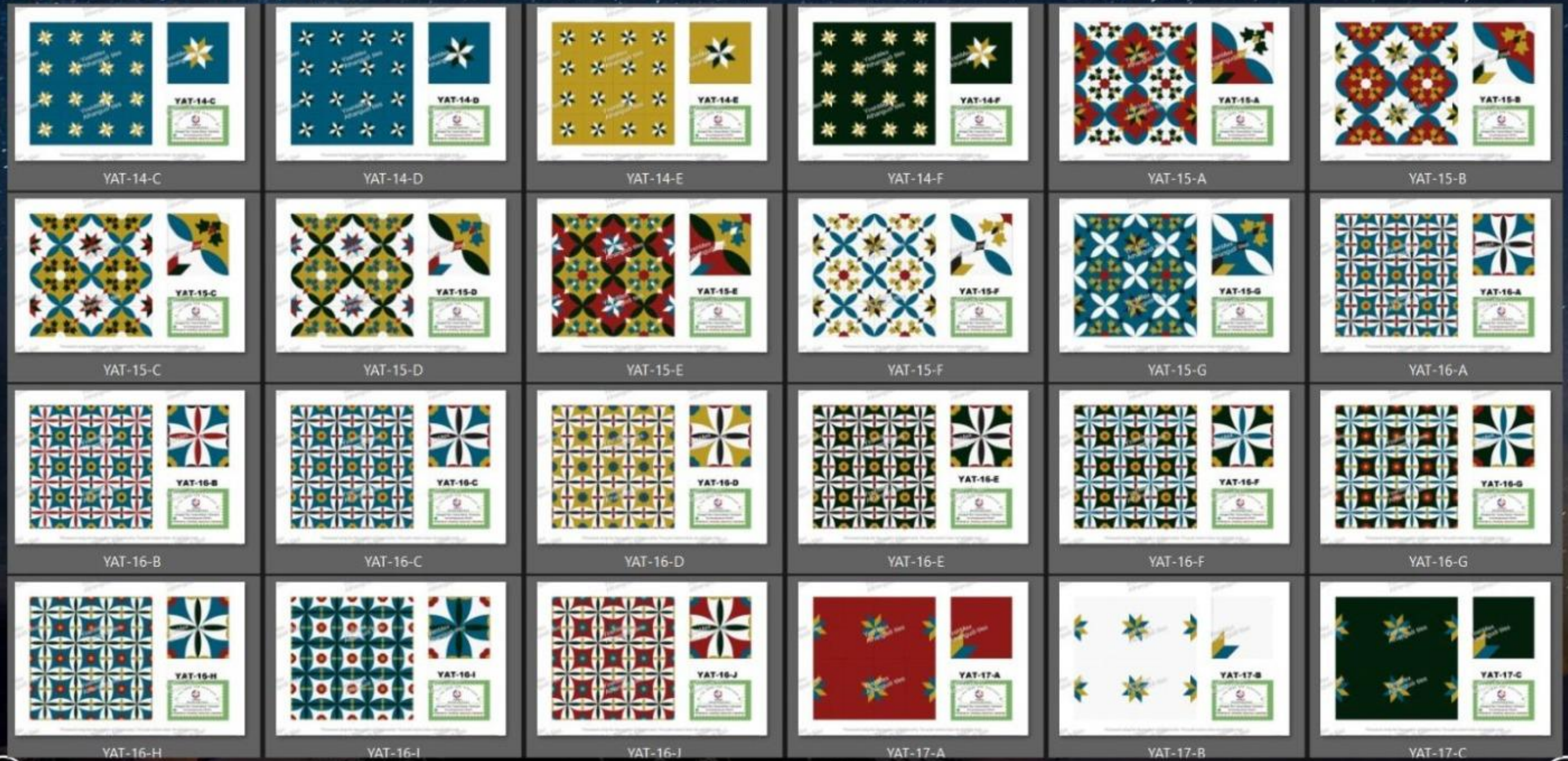
CONTACT US 9080581547

YIREHMEX ATHANGUDI TRADITIONAL TILES



CONTACT US 9080581547

YIREHMEX ATHANGUDI TRADITIONAL TILES



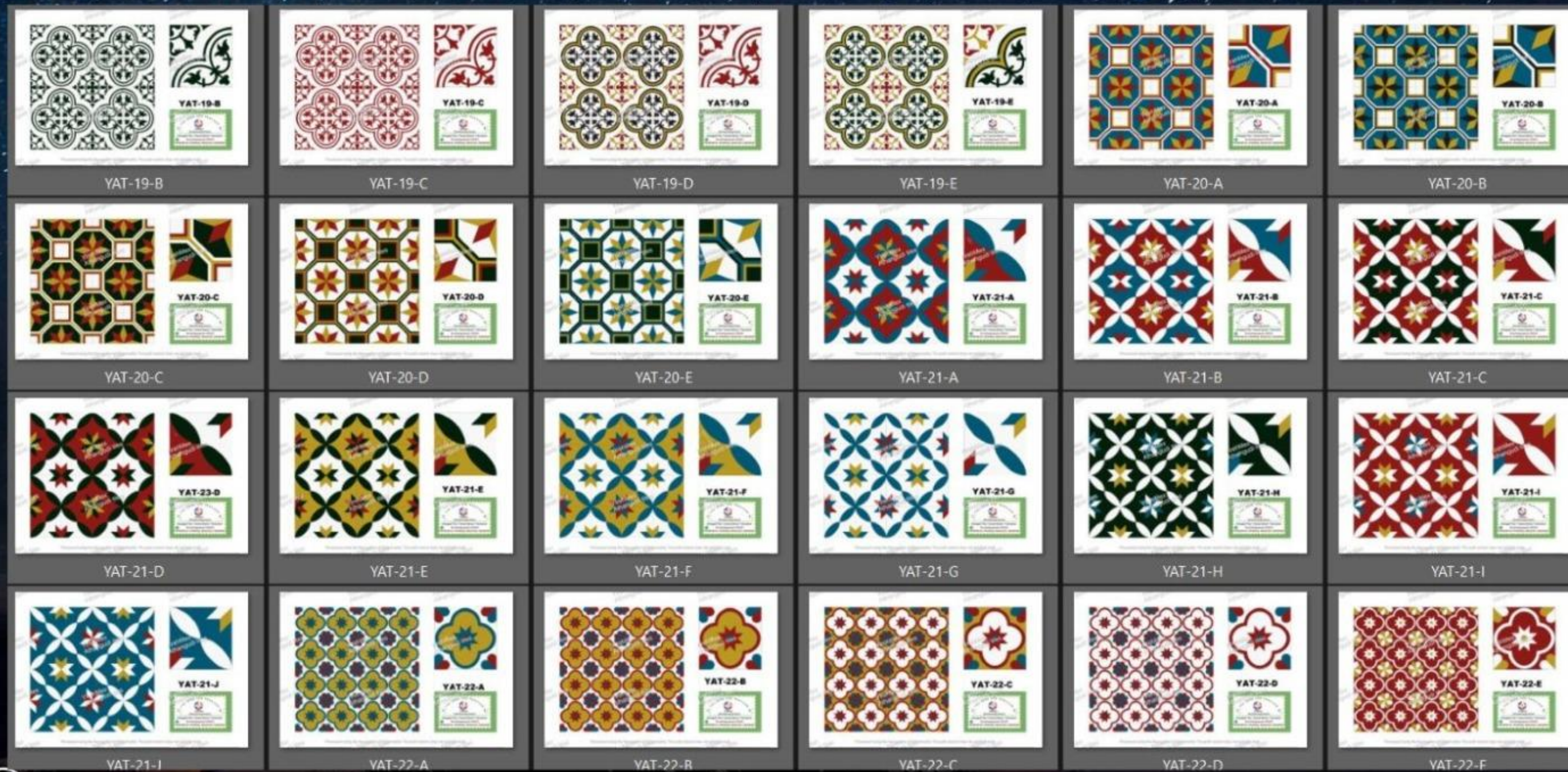
CONTACT US 9080581547

YIREHMEX ATHANGUDI TRADITIONAL TILES



CONTACT US 9080581547

YIREHMEX ATHANGUDI TRADITIONAL TILES



CONTACT US 9080581547

YIREHMEX ATHANGUDI TRADITIONAL TILES



YAT-22-F



YAT-23-A



YAT-23-B



YAT-23-C



YAT-23-D



YAT-23-E



YAT-23-F



YAT-23-G



YAT-24-A



YAT-24-B



YAT-24-C



YAT-24-D



YAT-24-E



YAT-24-F



YAT-25-A



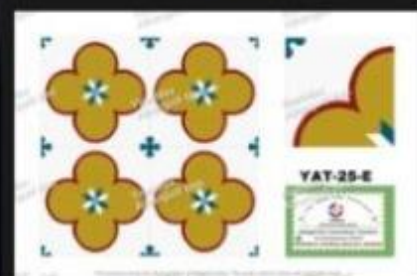
YAT-25-B



YAT-25-C



YAT-25-D



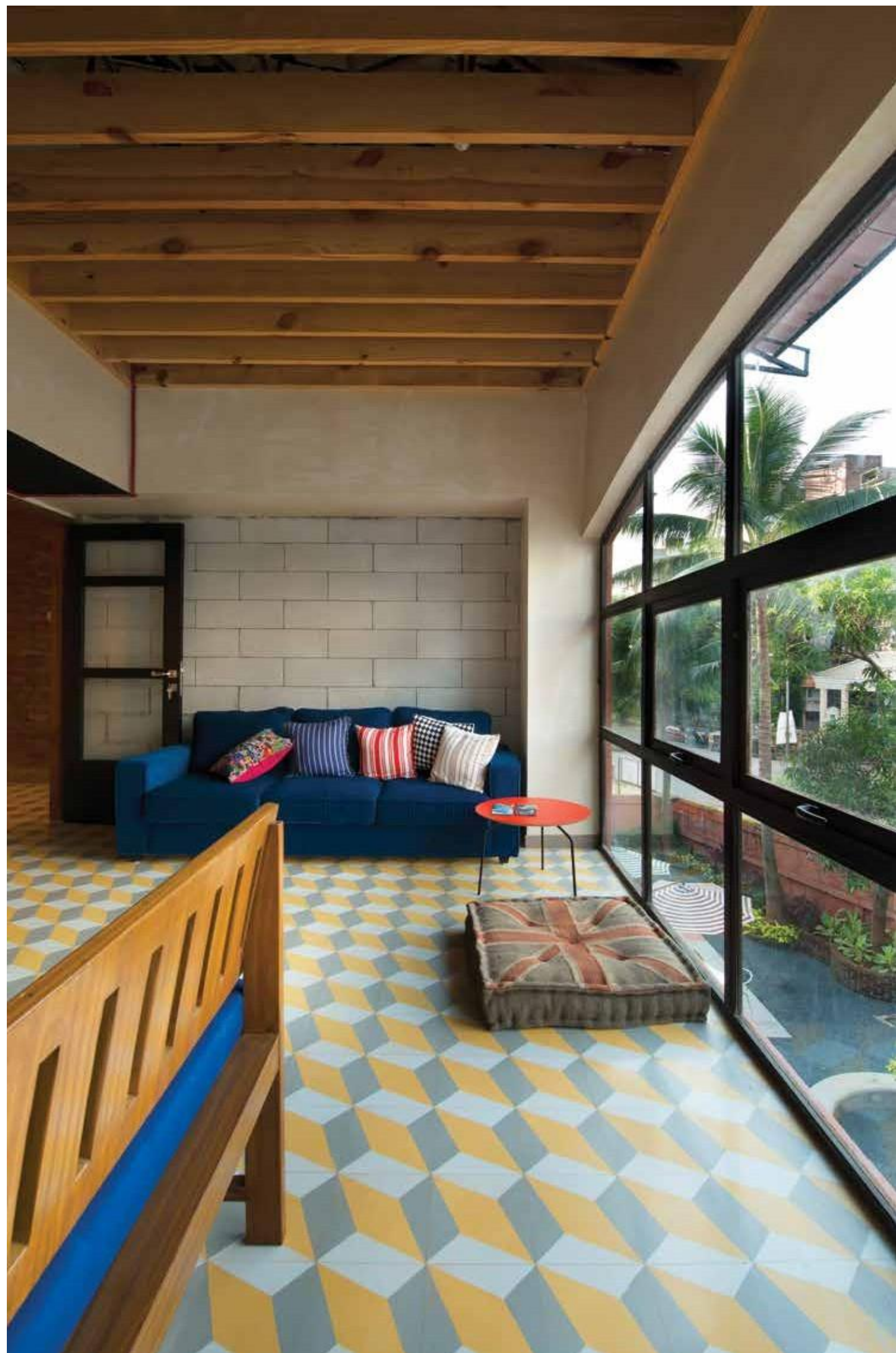
YAT-25-E

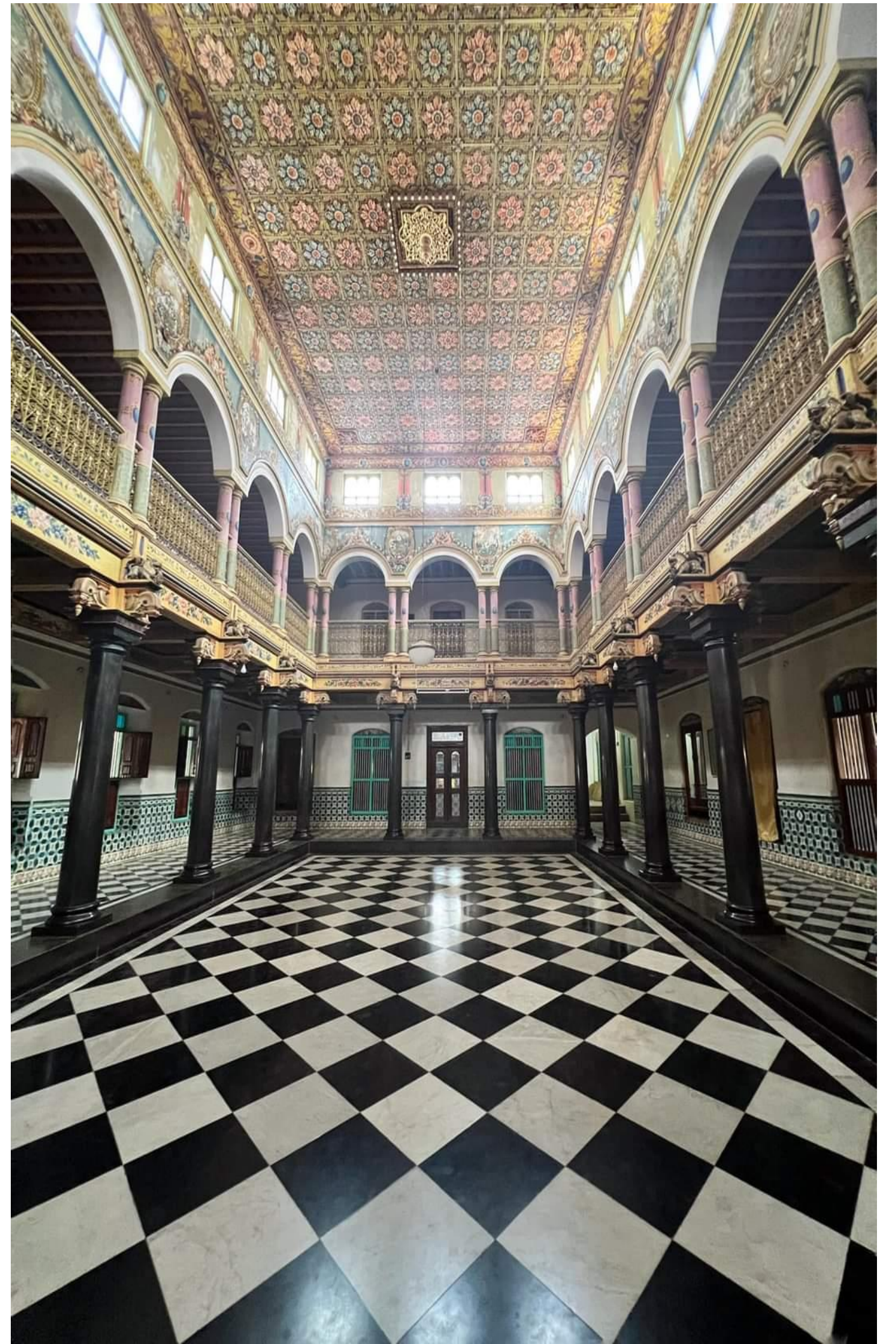


YAT-25-F

CONTACT US 9080581547





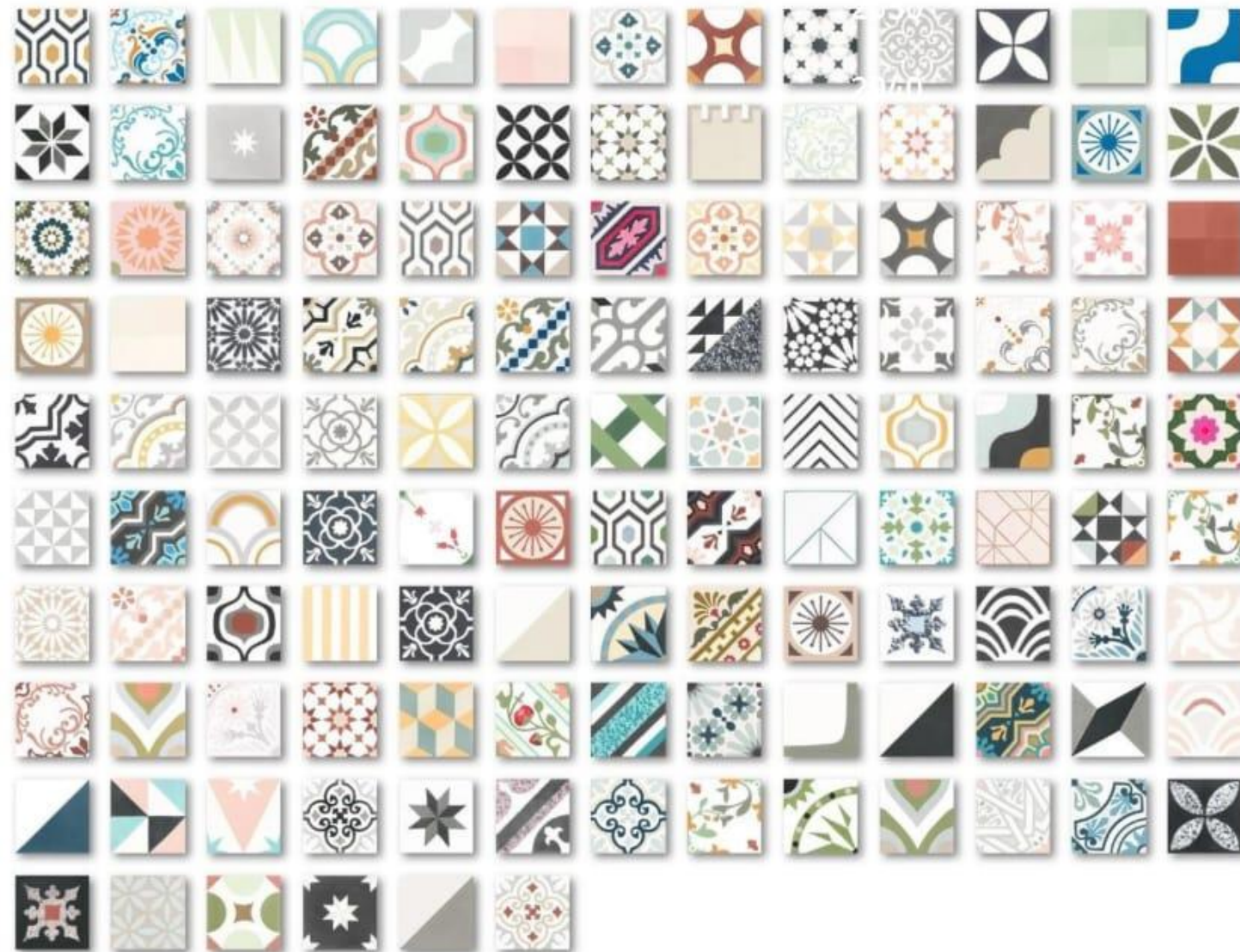




YIREHMEX ATHANGUDI FUTURE MODERN TILES



YIREHMEX

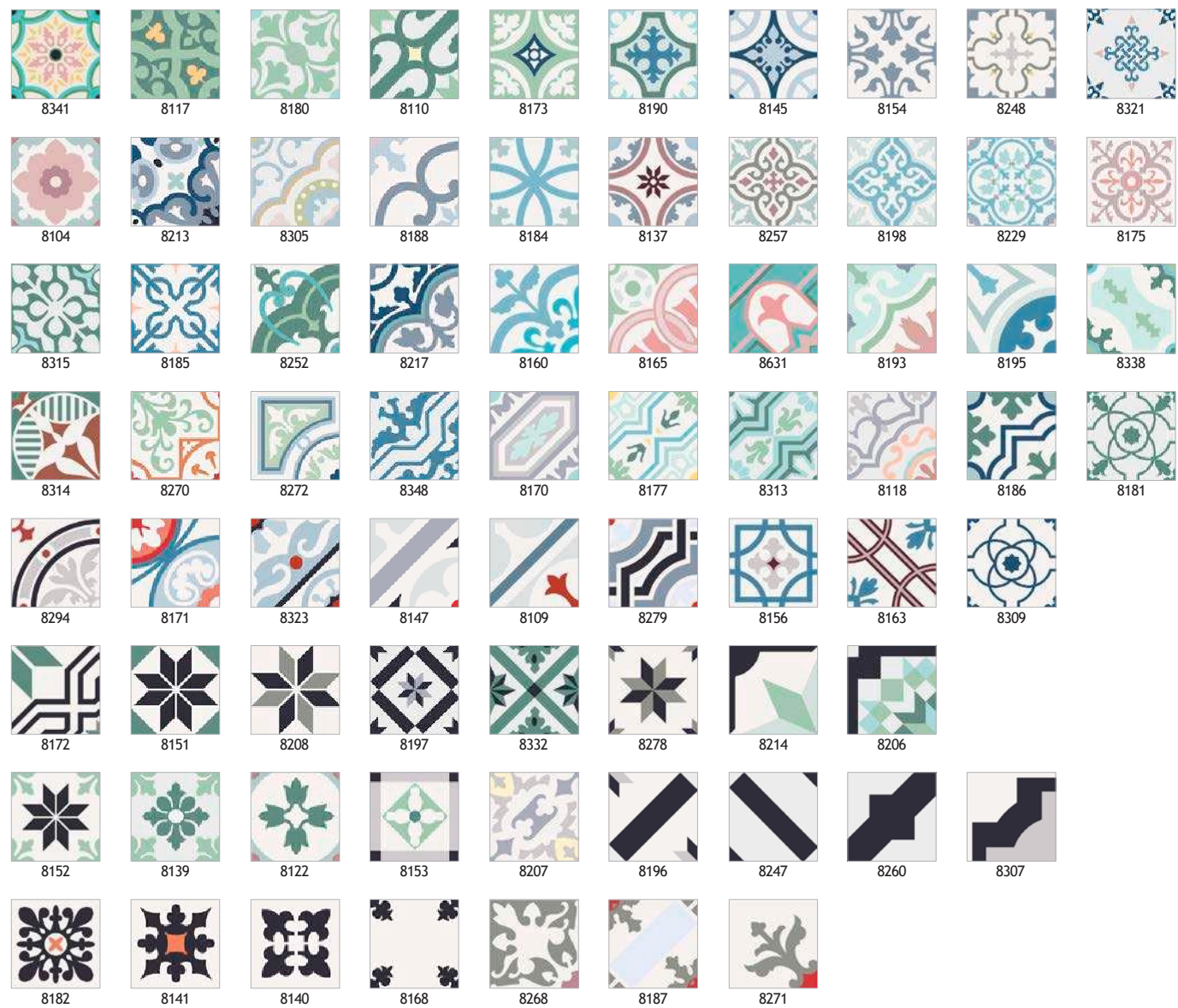


CONTACT US 9080581547

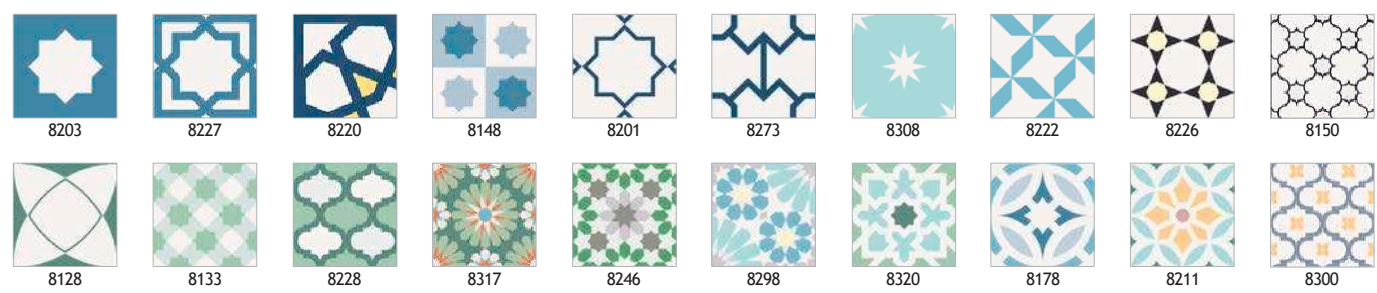
Athangudi Modern and Customized Tiles

INDEX 255 x 255 mm

CLASSIC PATTERNS



MOORISH PATTERNS

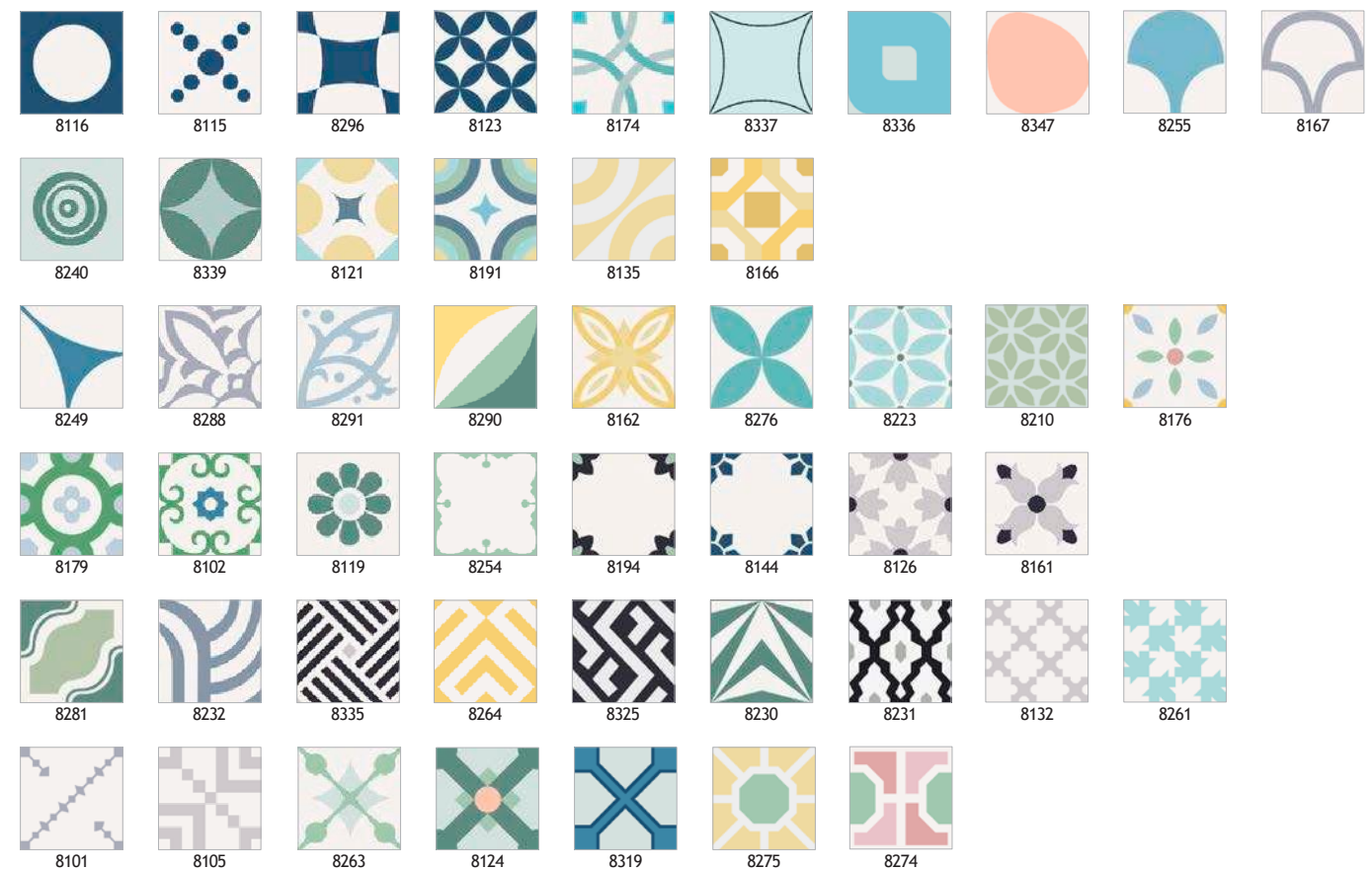


INDEX BORDERS / SKIRTING 255 x 127 mm

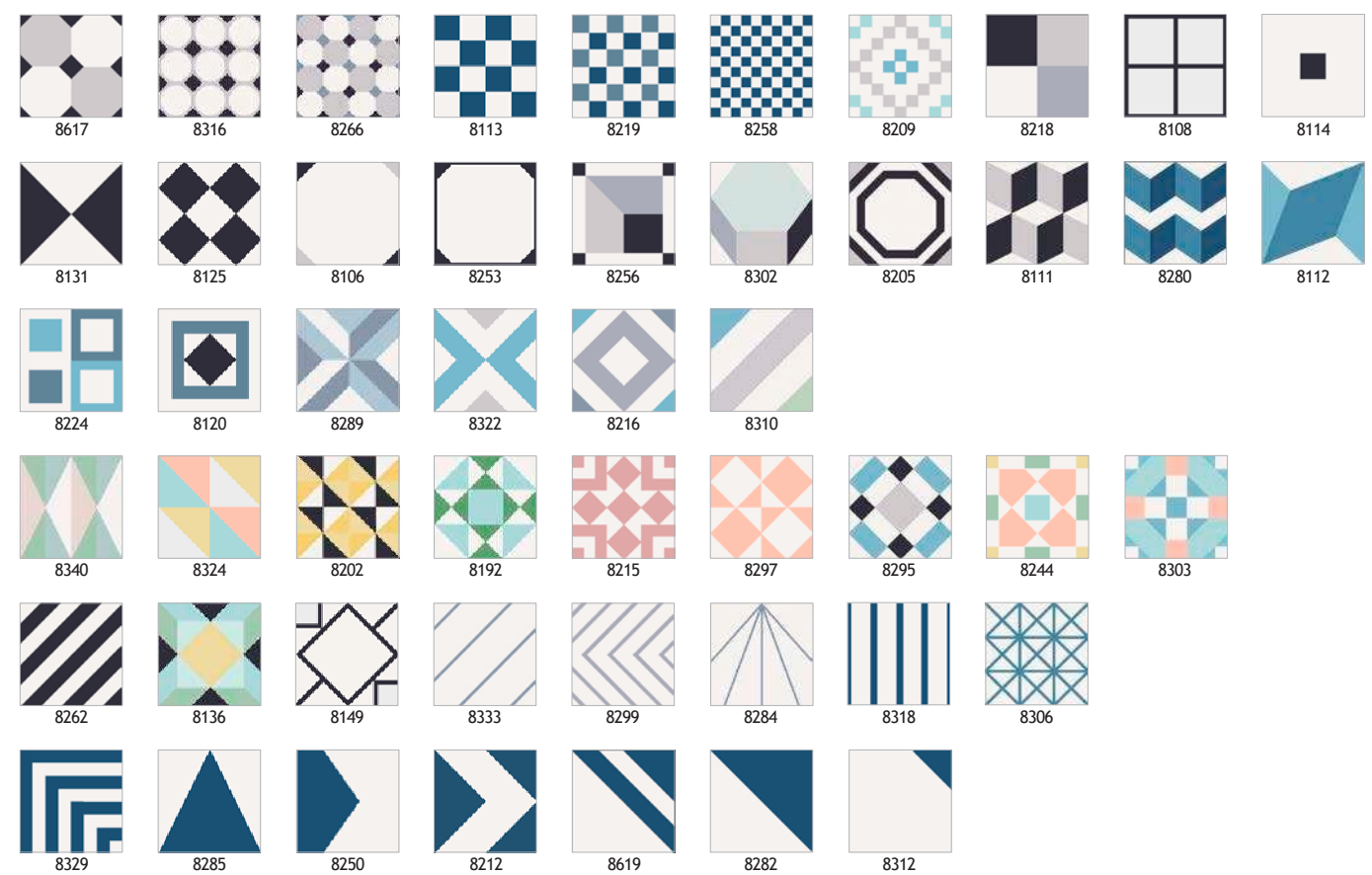


INDEX 255 x 255 mm

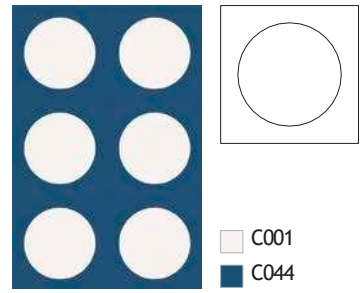
CONTEMPORARY PATTERNS



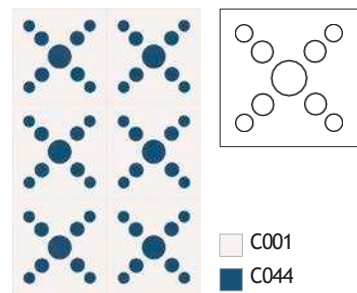
GEOMETRIC PATTERNS



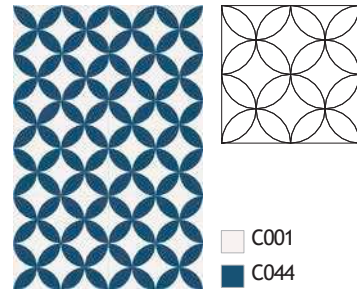
255 x 255 mm —Pattern Tiles



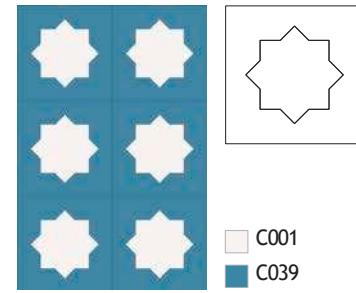
8116
Contemporary



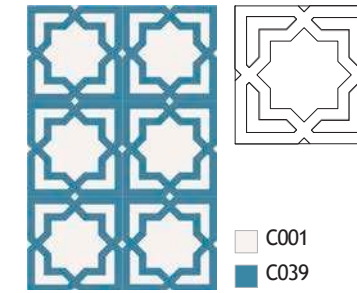
8115
Contemporary



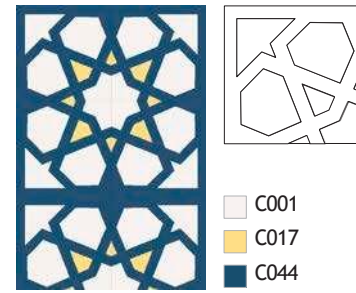
8123
Contemporary



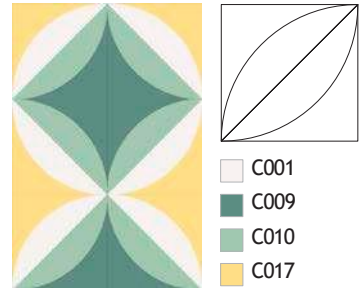
8203
Moorish



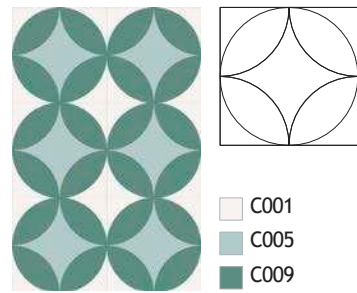
8227
Moorish



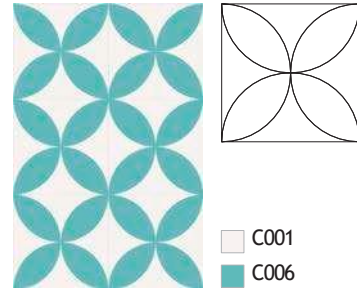
8220
Moorish



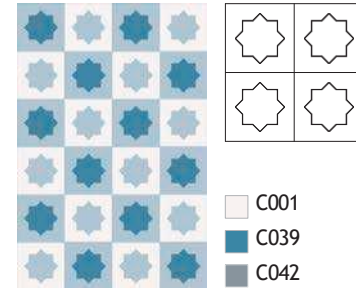
8290
Contemporary



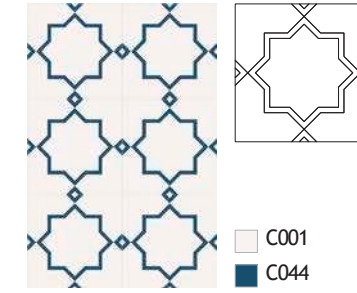
8339
Contemporary



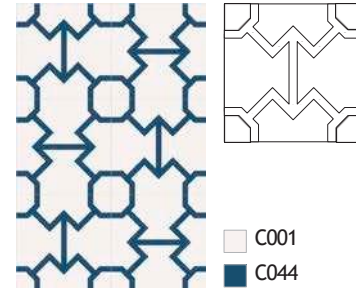
8276
Contemporary



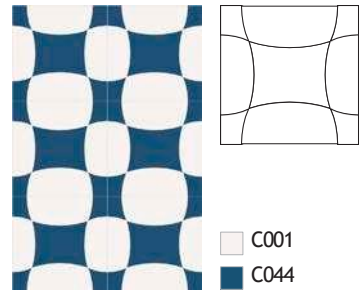
8148
Moorish



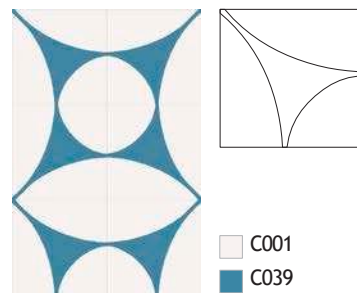
8201
Moorish



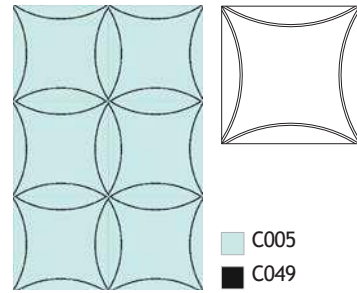
8273
Moorish



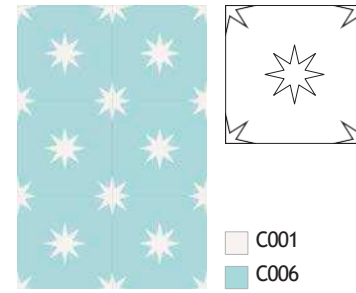
8296
Contemporary



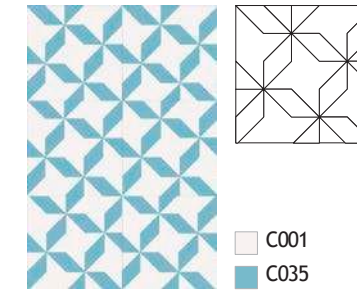
8249
Contemporary



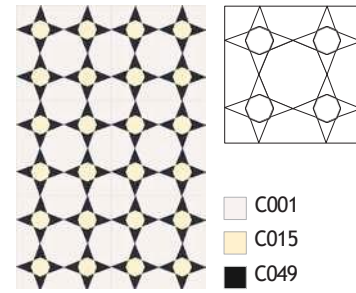
8337
Contemporary



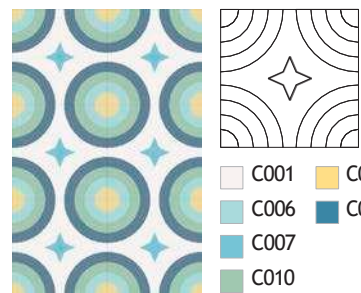
8308
Moorish



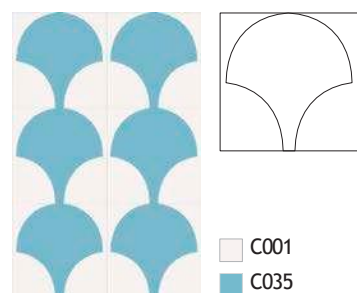
8222
Moorish



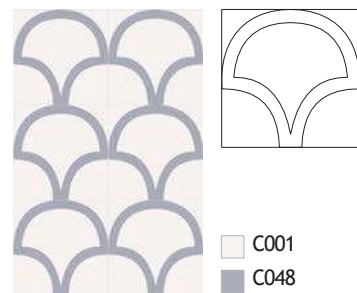
8226
Moorish



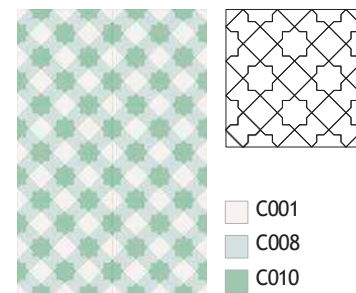
8191
Contemporary



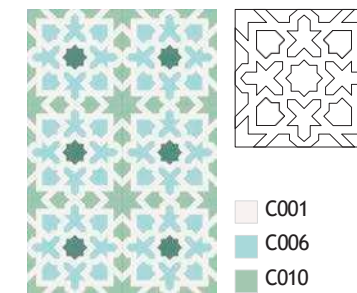
8255
Contemporary



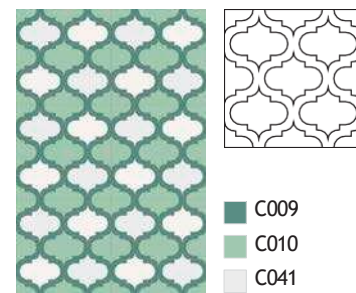
8167
Contemporary



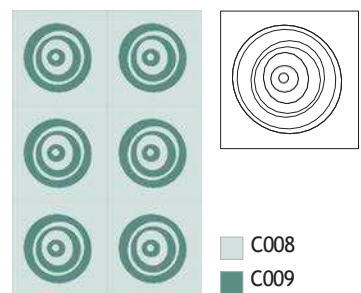
8133
Moorish



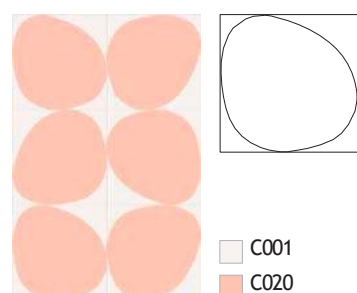
8320
Moorish



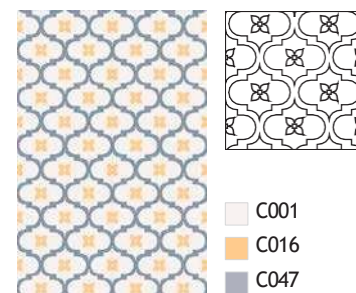
8228
Moorish



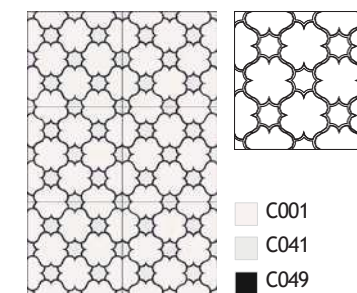
8240
Contemporary



8347
Contemporary



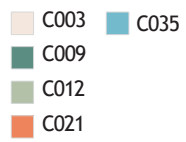
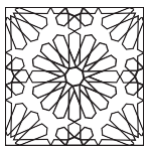
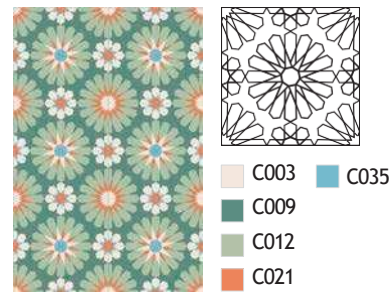
8300
Moorish



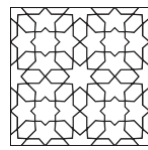
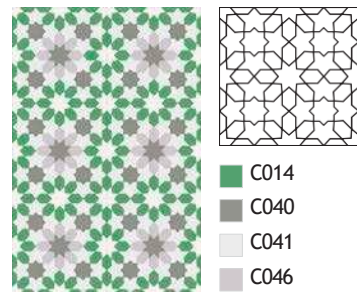
8150
Moorish

There may be some variation in the colours of the actual product. Drawings not to scale. Tiles are handmade, shade variation can be expected.

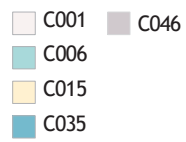
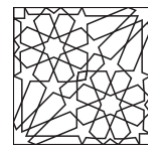
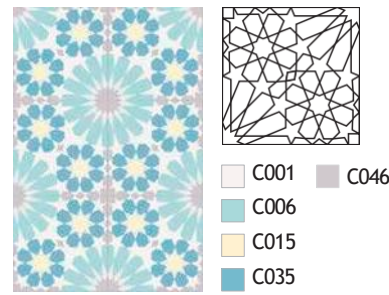
255 x 255 mm—Pattern Tiles



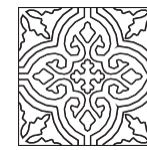
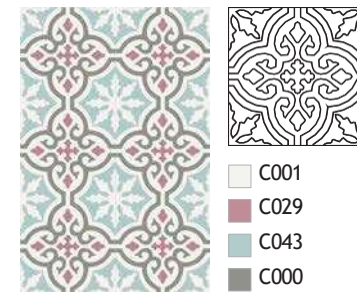
8317
Moorish



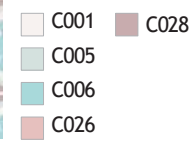
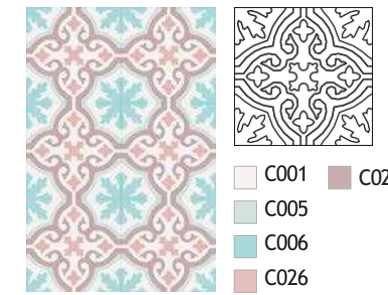
8246
Moorish



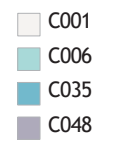
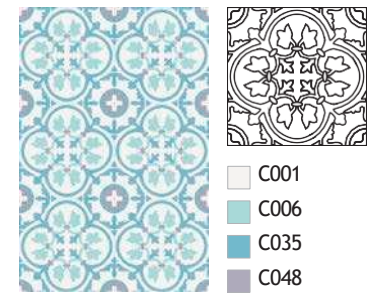
8298
Moorish



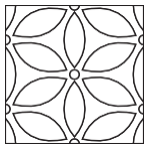
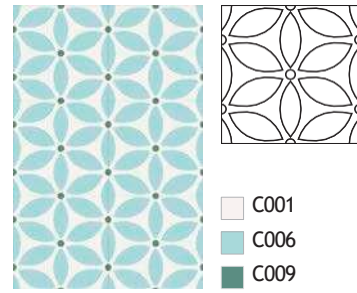
8257
Classic



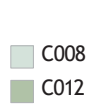
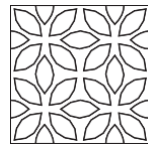
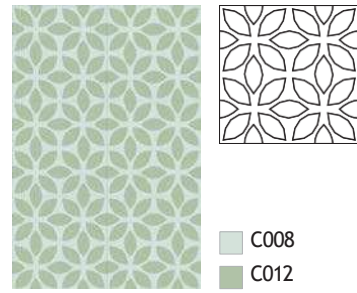
8198
Classic



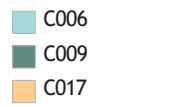
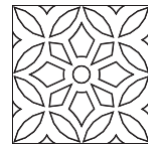
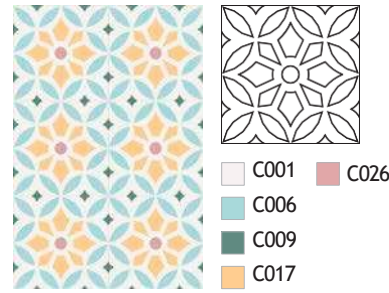
8229
Classic



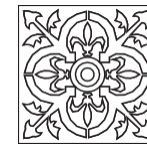
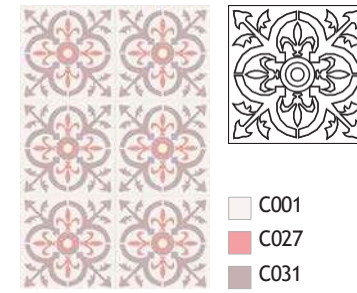
8223
Contemporary



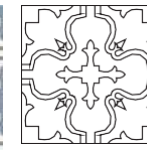
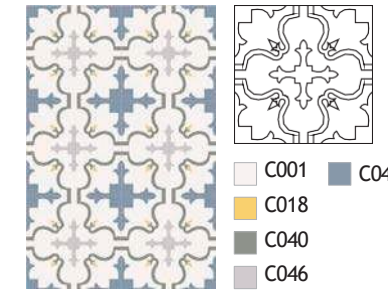
8210
Contemporary



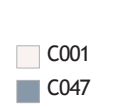
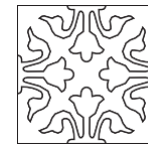
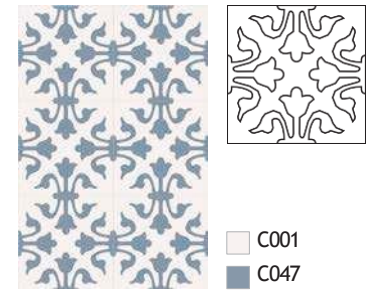
8211
Moorish



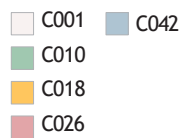
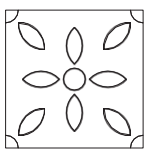
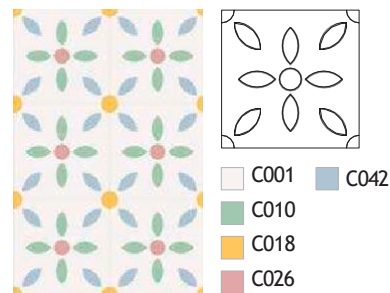
8175
Classic



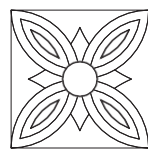
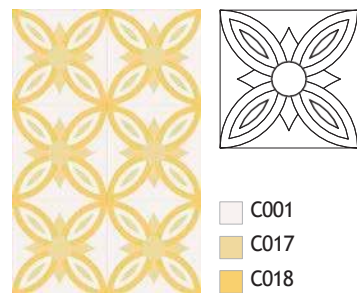
8248
Classic



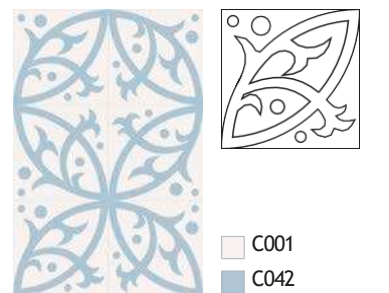
8154
Classic



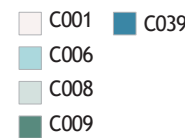
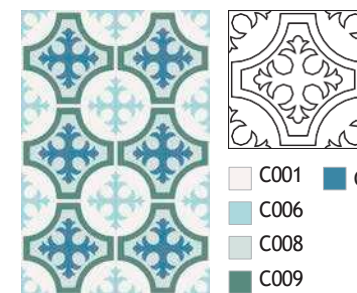
8176
Contemporary



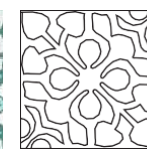
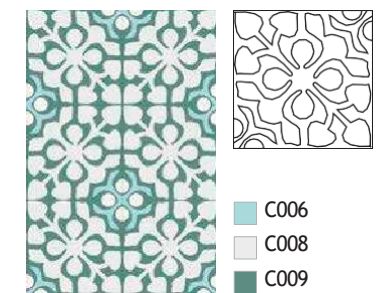
8162
Contemporary



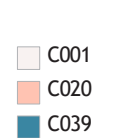
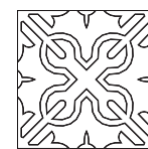
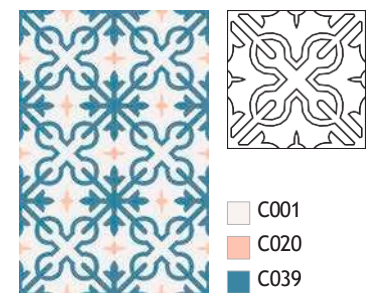
8291
Contemporary



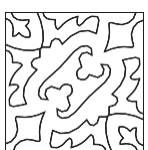
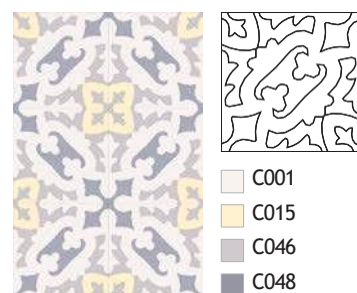
8190
Classic



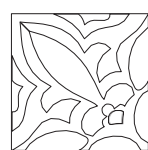
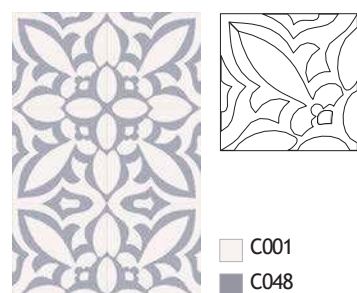
8315
Classic



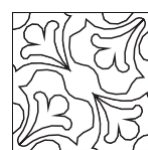
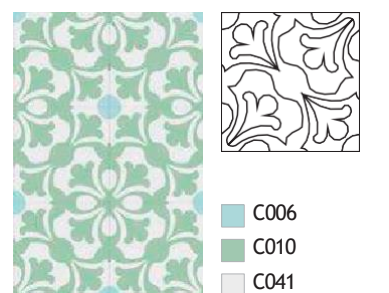
8185
Classic



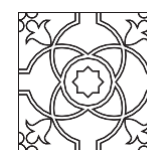
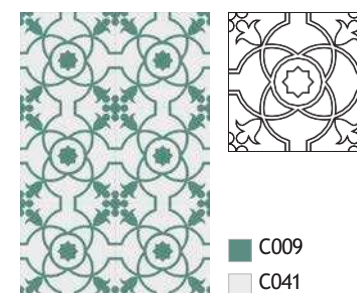
8207
Classic



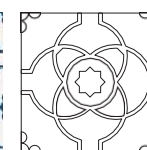
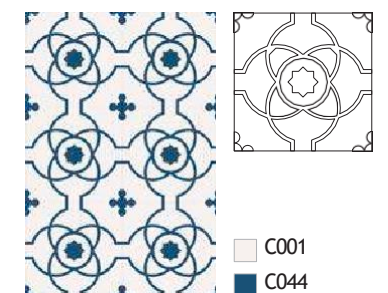
8288
Contemporary



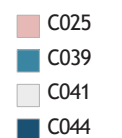
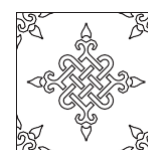
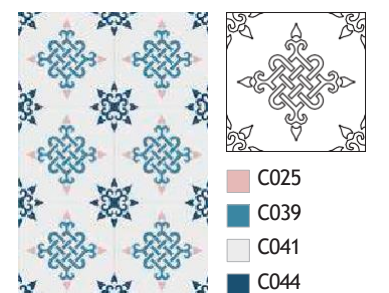
8180
Classic



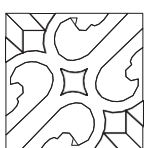
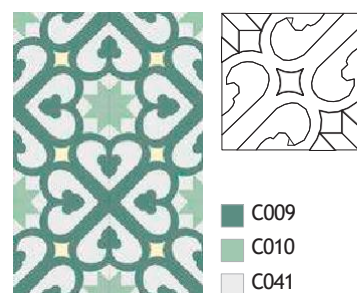
8181
Classic



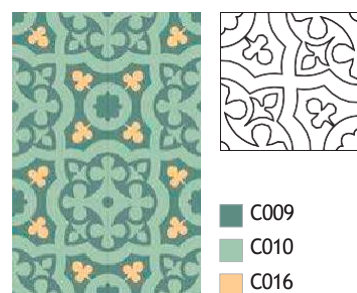
8309
Classic



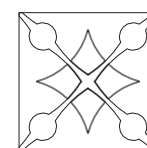
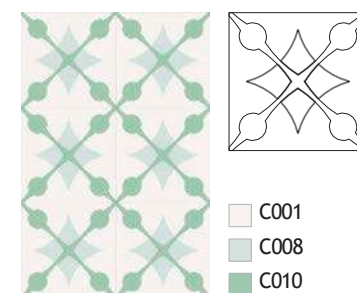
8321
Classic



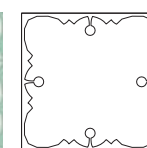
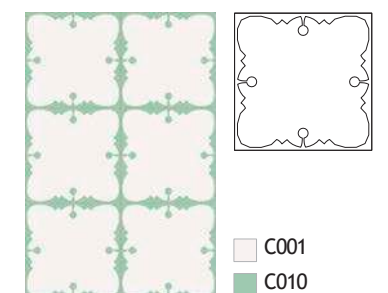
8110
Classic



8117
Classic



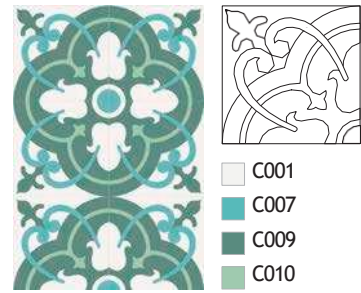
8263
Contemporary



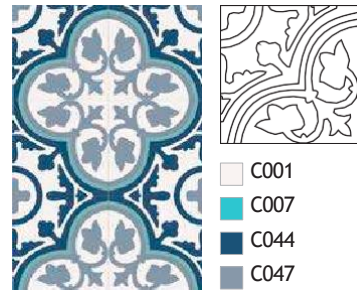
8254
Contemporary

There may be some variation in the colours of the actual product.
Drawings not to scale.
Tiles are handmade, shade variation can be expected.

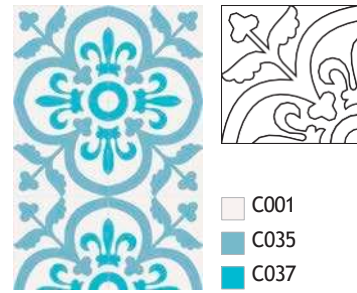
255 x 255 mm—Pattern Tiles



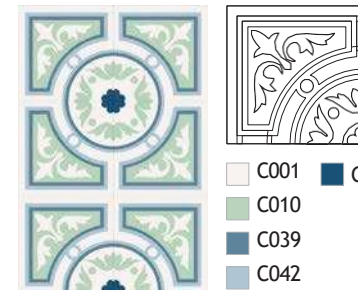
8252
Classic



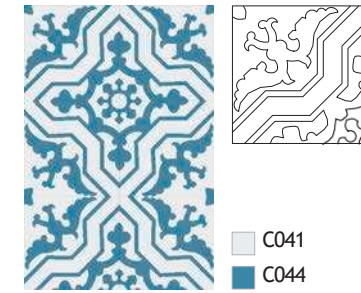
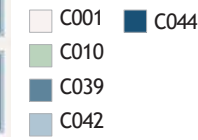
8217
Classic



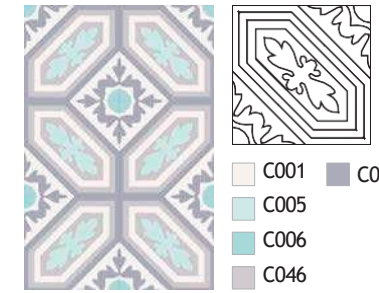
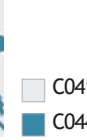
8160
Classic



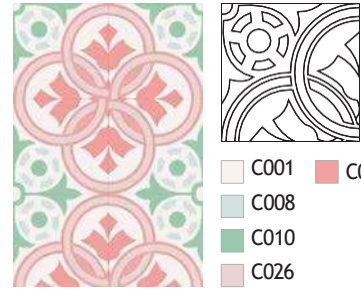
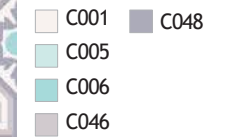
8272
Classic



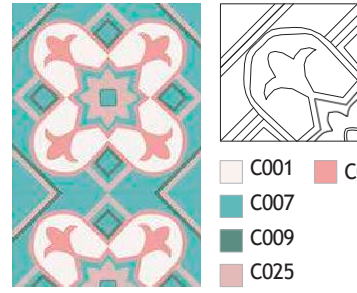
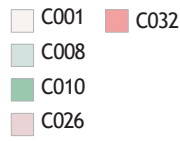
8348
Classic



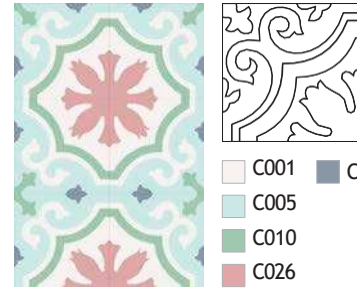
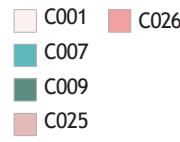
8170
Classic



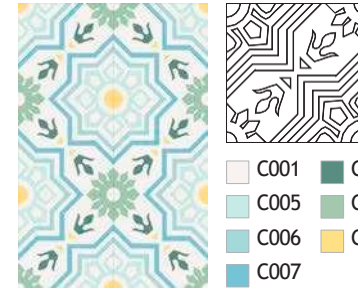
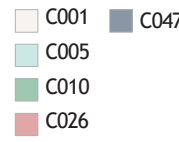
8165
Classic



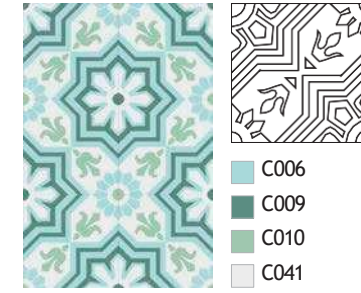
8631
Classic



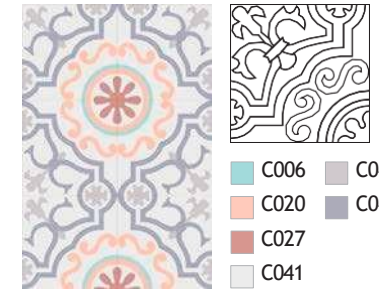
8193
Classic



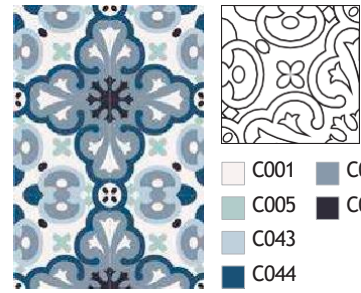
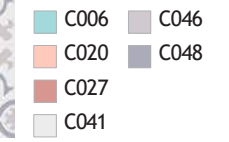
8177
Classic



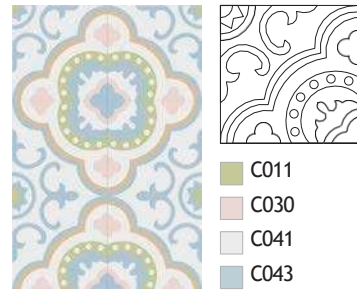
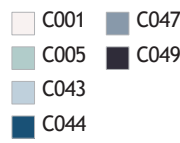
8313
Classic



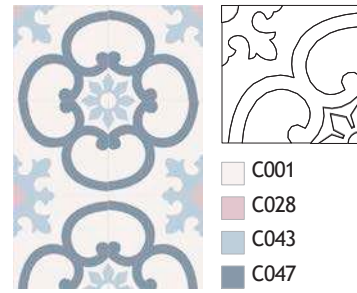
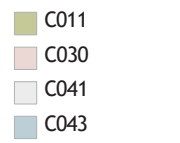
8118
Classic



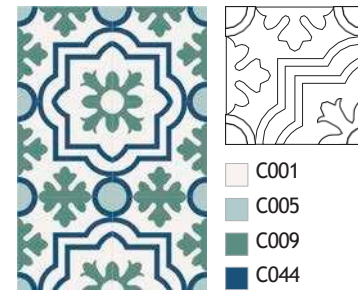
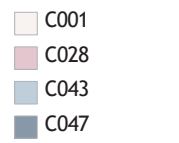
8213
Classic



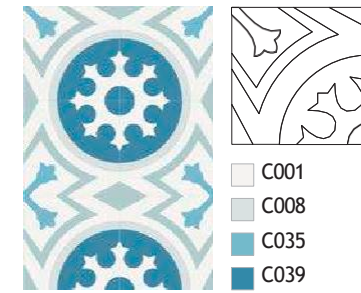
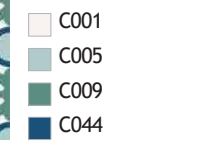
8305
Classic



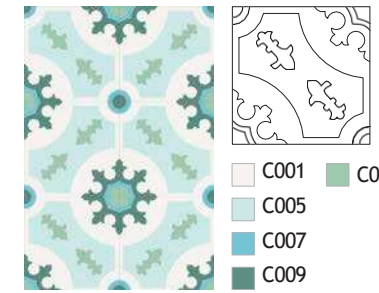
8188
Classic



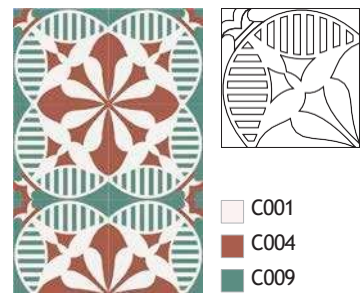
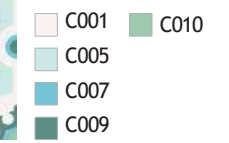
8186
Classic



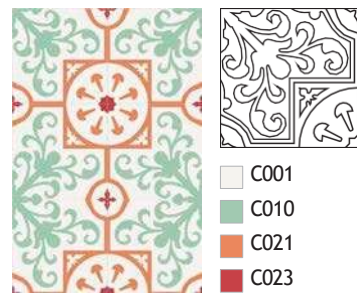
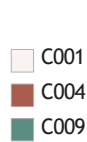
8195
Classic



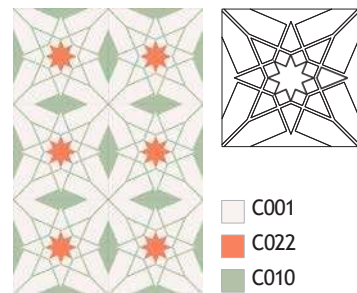
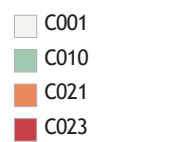
8338
Classic



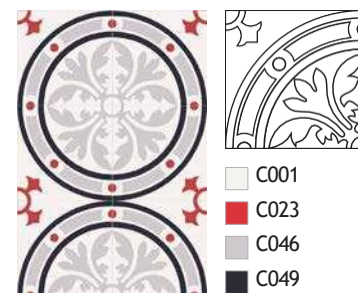
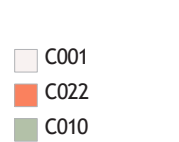
8314
Classic



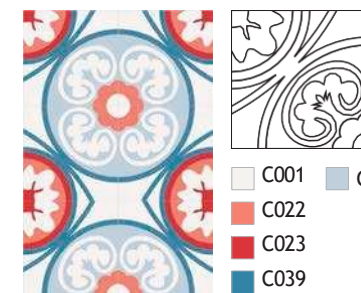
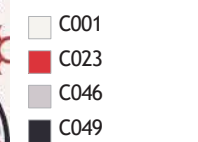
8270
Classic



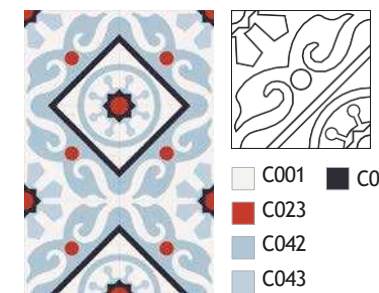
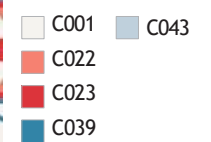
8138
Moorish



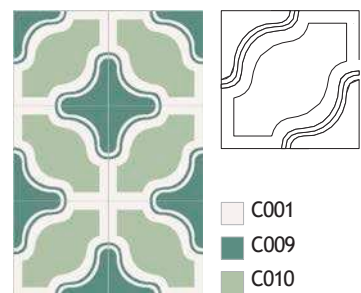
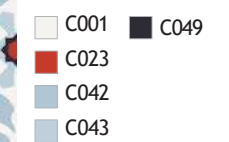
8294
Classic



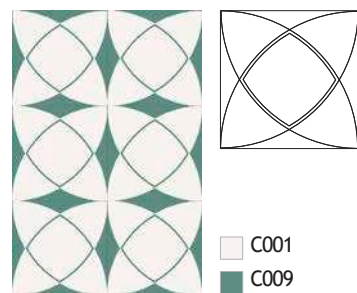
8171
Classic



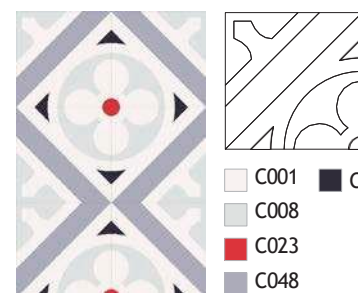
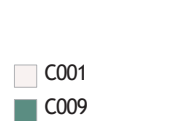
8323
Classic



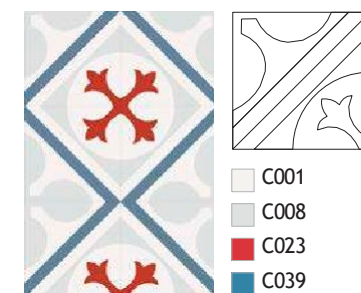
8281
Contemporary



8128
Moorish



8147
Classic

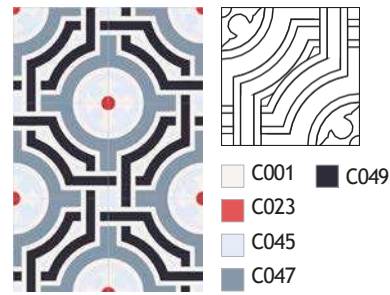


8109
Classic

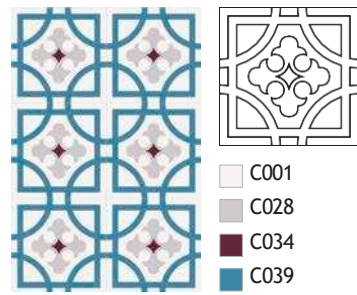


There may be some variation in the colours of the actual product.
Drawings not to scale.
Tiles are handmade, shade variation can be expected.

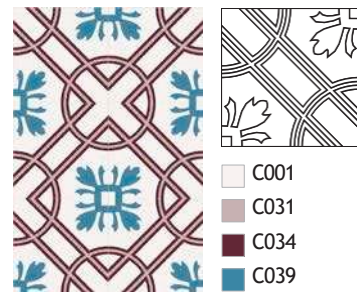
255 x 255 mm—Pattern Tiles



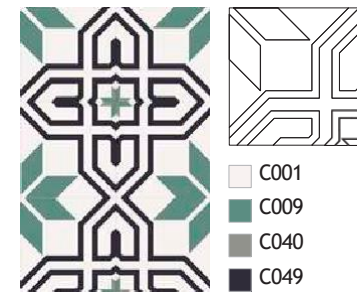
8279
Classic



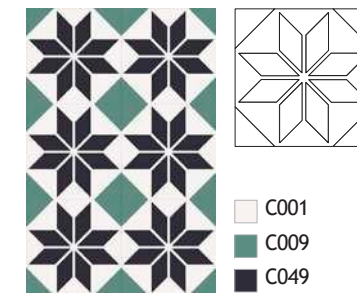
8156
Classic



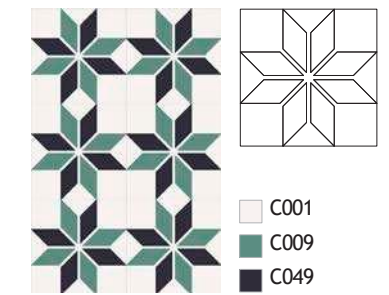
8163
Classic



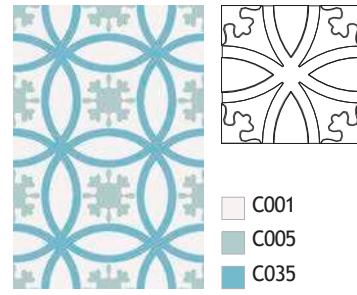
8172
Classic



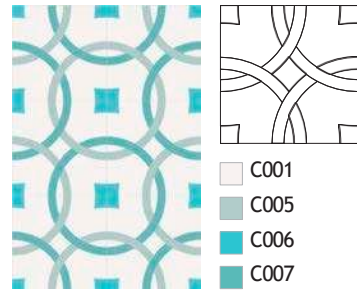
8151
Classic



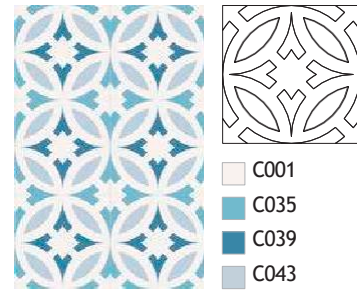
8208
Classic



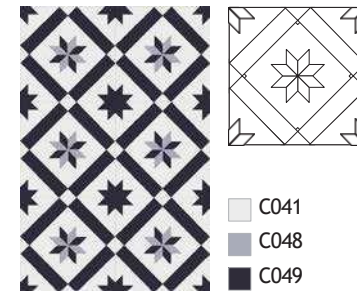
8184
Classic



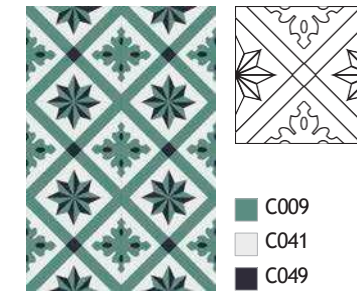
8174
Contemporary



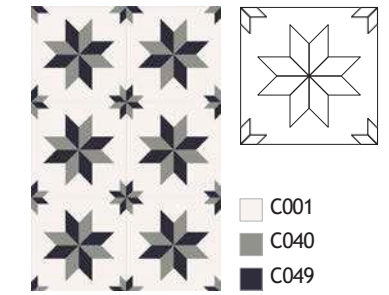
8178
Moorish



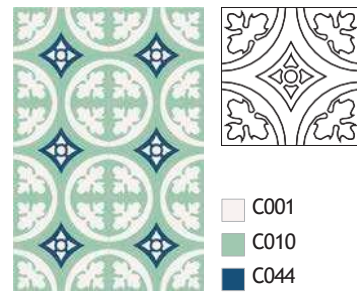
8197
Classic



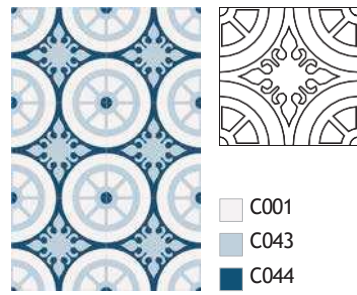
8332
Classic



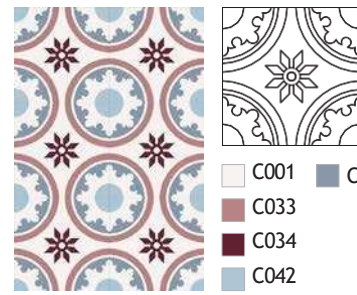
8278
Classic



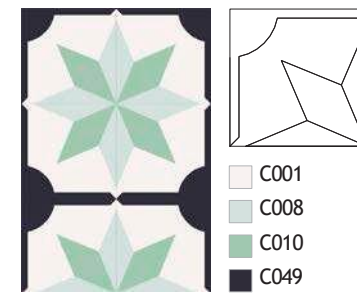
8173
Classic



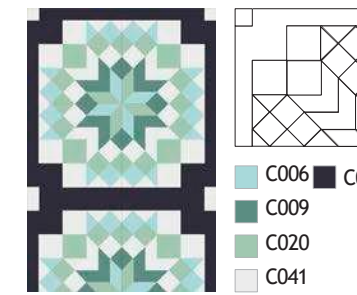
8145
Classic



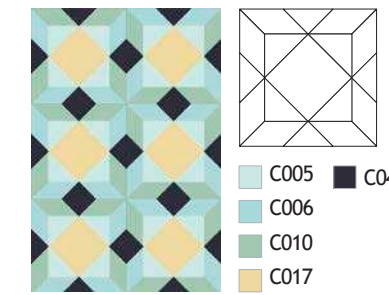
8137
Classic



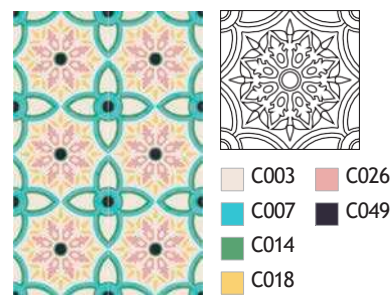
8214
Classic



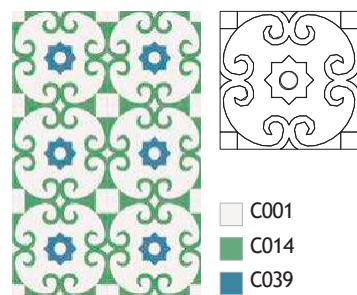
8206
Classic



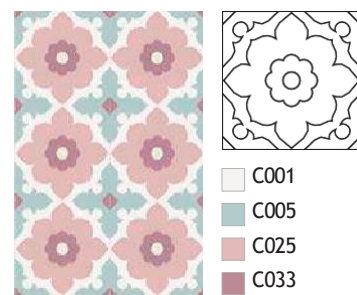
8136
Geometric



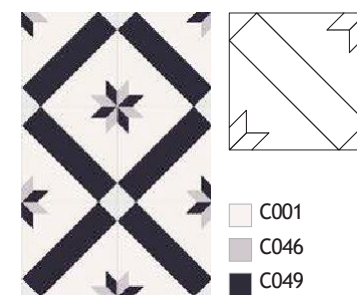
8341
Classic



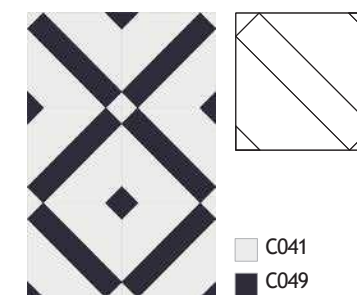
8102
Contemporary



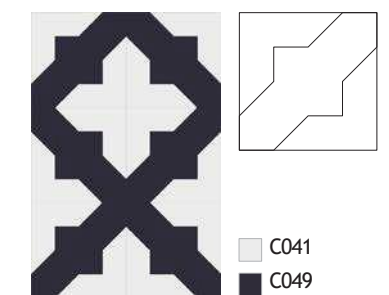
8104
Classic



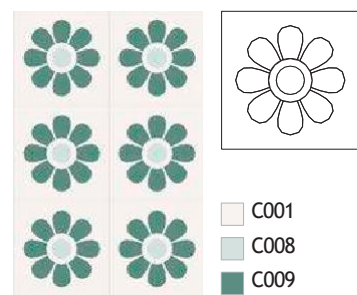
8196
Classic



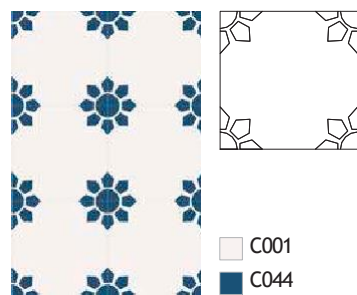
8247
Classic



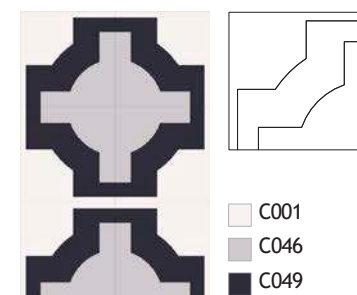
8260
Classic



8119
Contemporary



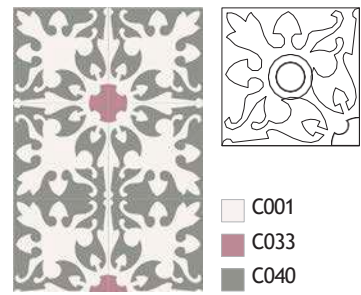
8144
Contemporary



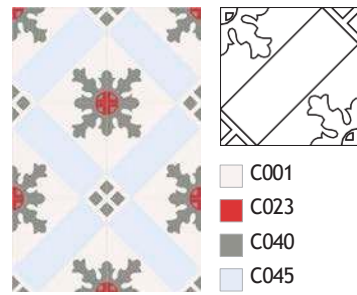
8307
Classic

There may be some variation in the colours of the actual product. Drawings not to scale. Tiles are handmade, shade variation can be expected.

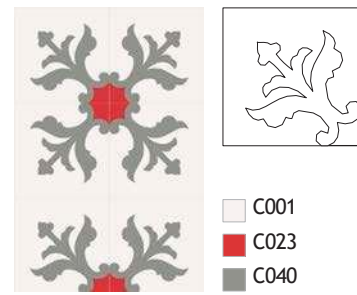
255 x 255 mm—Pattern Tiles



8268
Classic



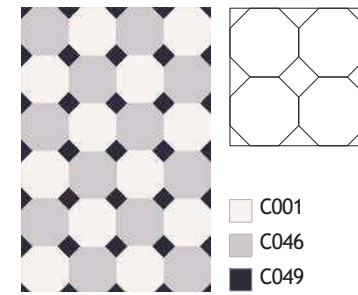
8187
Classic



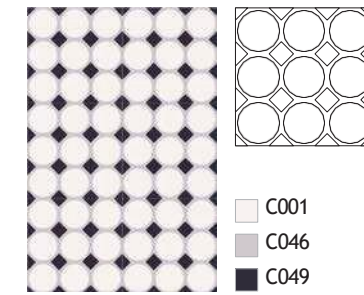
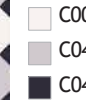
8271
Classic



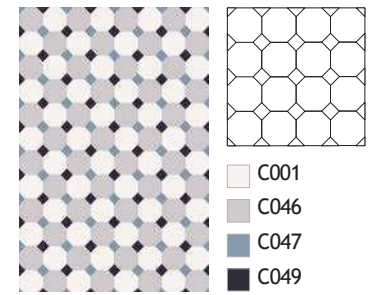
255 x 255 mm—Pattern Tiles



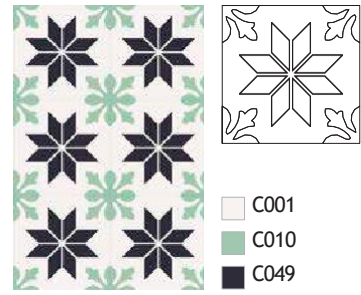
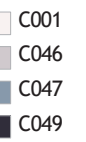
8617
Geometric



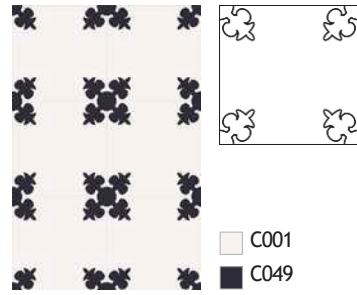
8316
Geometric



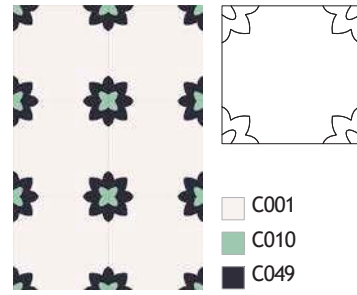
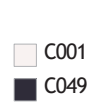
8266
Geometric



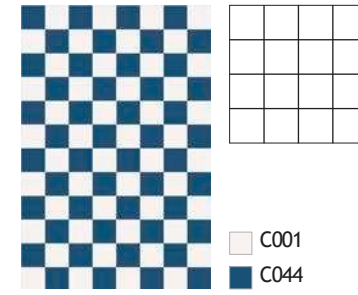
8152
Classic



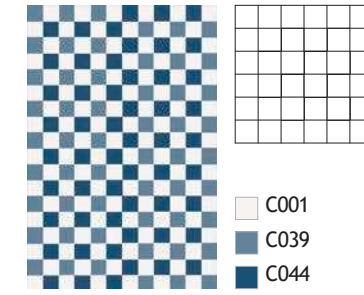
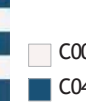
8168
Classic



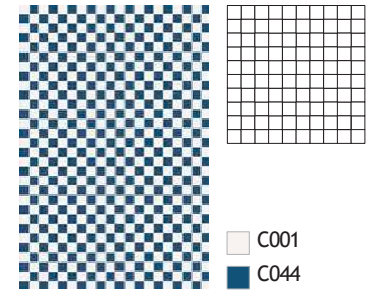
8194
Contemporary



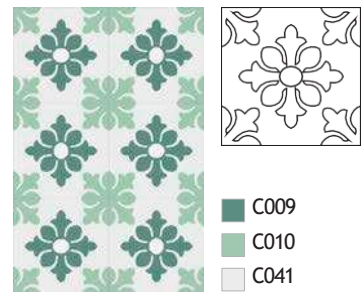
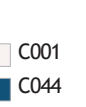
8113
Geometric



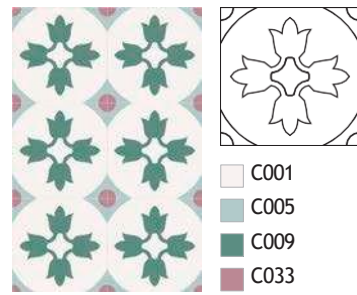
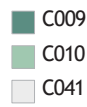
8219
Geometric



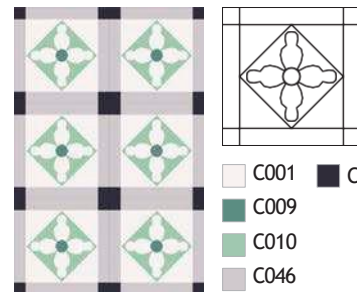
8258
Geometric



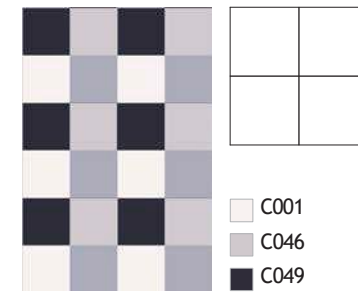
8139
Classic



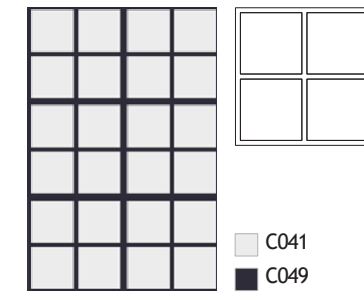
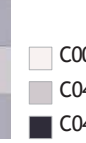
8122
Classic



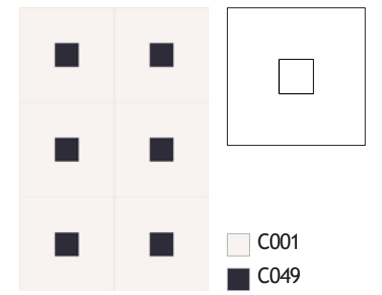
8153
Classic



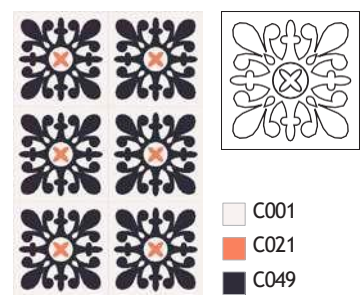
8218
Geometric



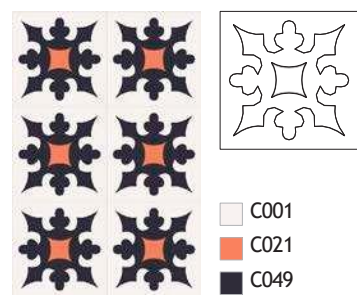
8108
Geometric



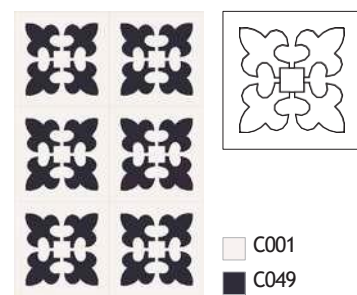
8114
Geometric



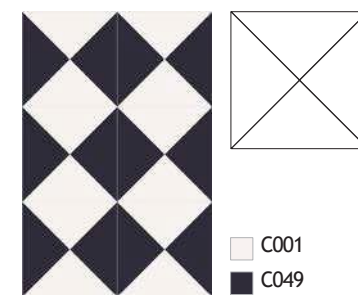
8182
Classic



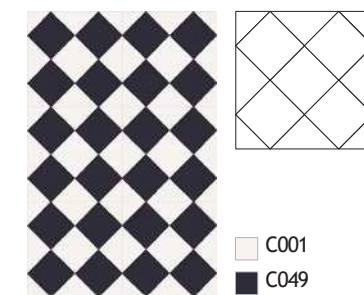
8141
Classic



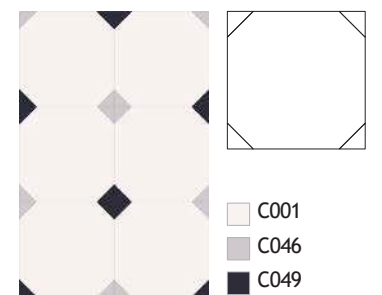
8140
Classic



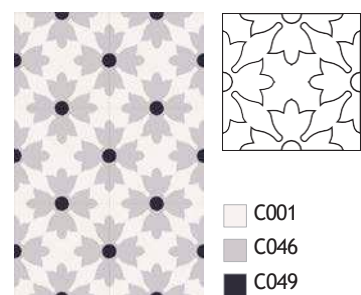
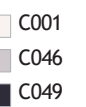
8131
Geometric



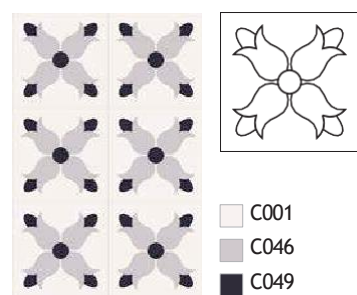
8125
Geometric



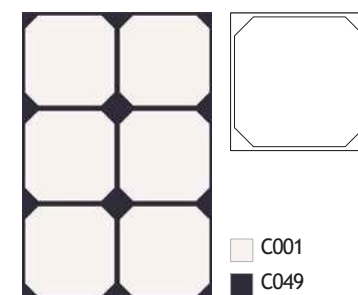
8106
Geometric



8126
Contemporary



8161
Contemporary

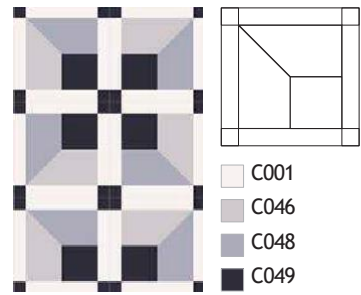


8253
Geometric

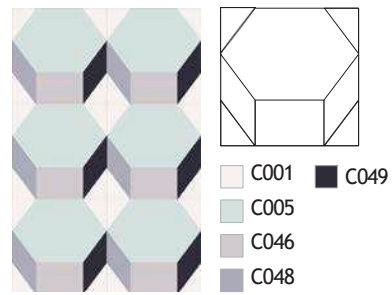


There may be some variation in the colours of the actual product.
Drawings not to scale.
Tiles are handmade, shade variation can be expected.

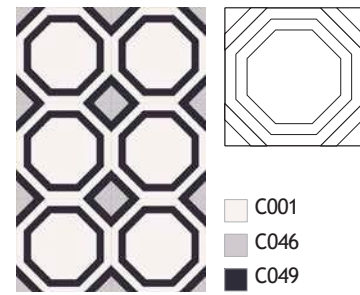
20 x 20 cm —Pattern Tiles



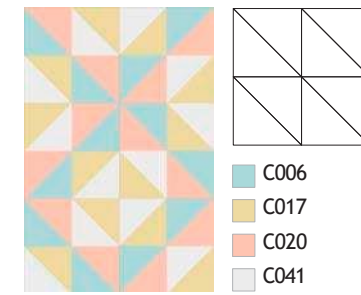
8256
Geometric



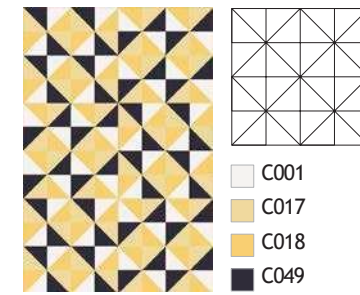
8302
Geometric



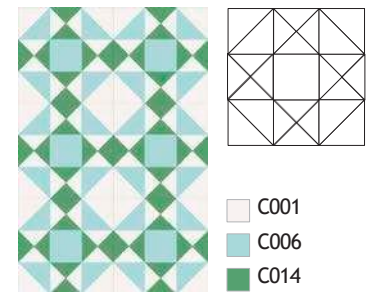
8205
Geometric



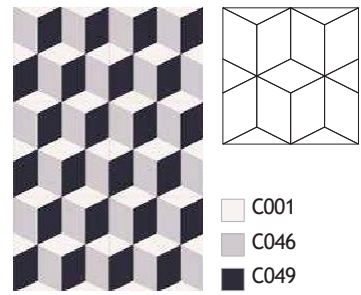
8324
Geometric



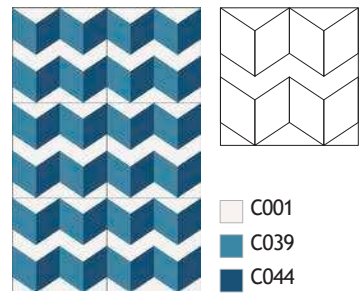
8202
Geometric



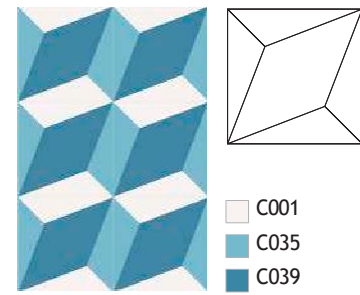
8192
Geometric



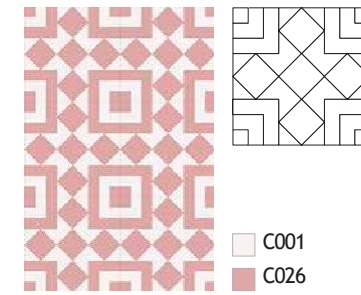
8111
Geometric



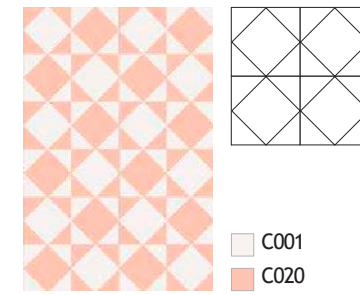
8280
Geometric



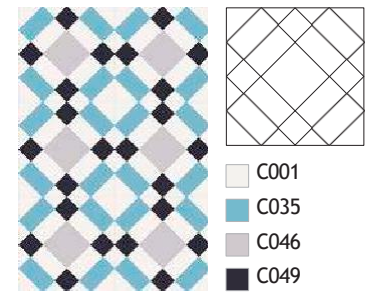
8112
Geometric



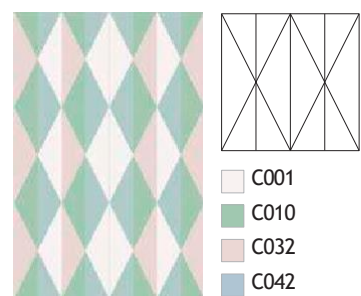
8215
Geometric



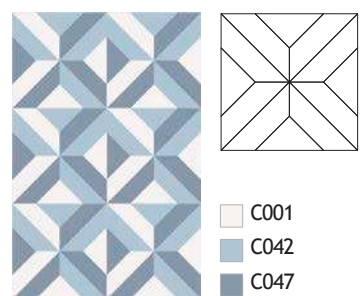
8297
Geometric



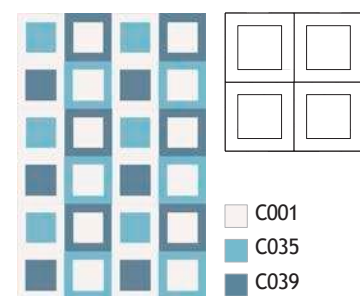
8295
Geometric



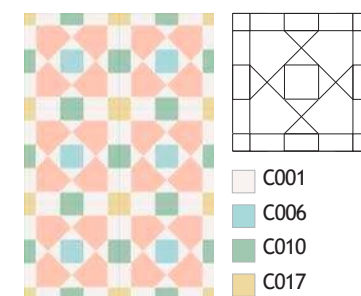
8340
Geometric



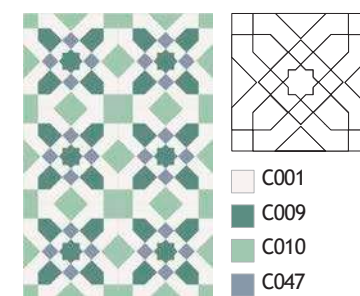
8289
Geometric



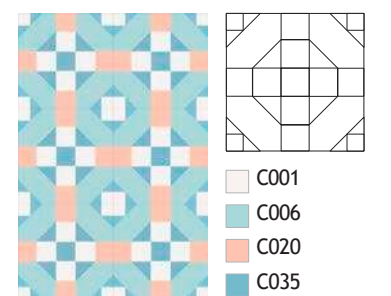
8224
Geometric



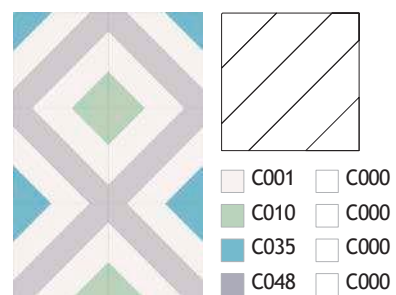
8244
Contemporary



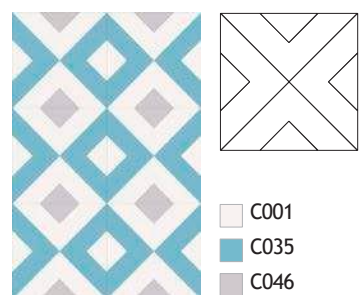
8221
Moorish



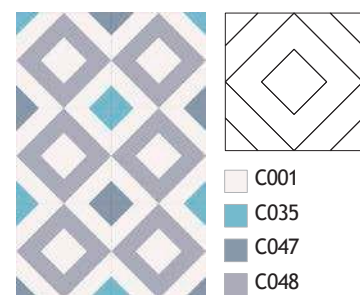
8303
Contemporary



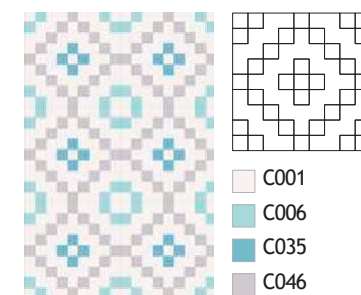
8310
Geometric



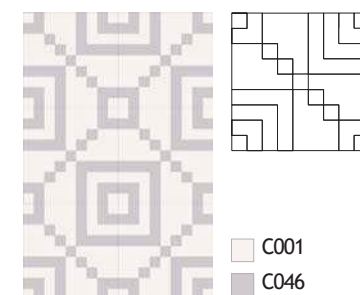
8322
Geometric



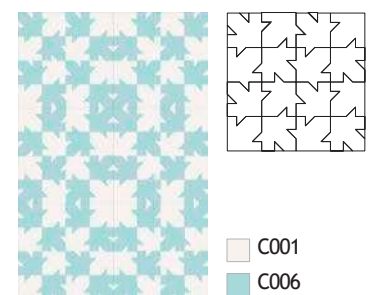
8216
Geometric



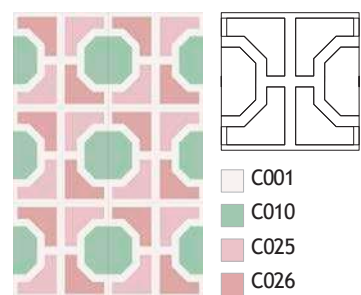
8209
Geometric



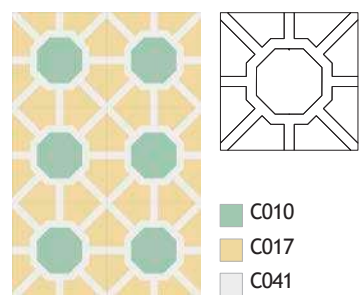
8105
Contemporary



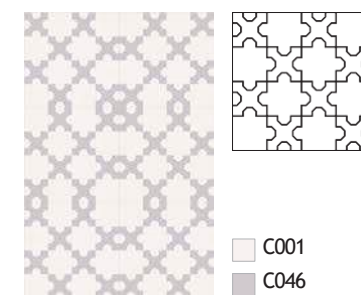
8261
Contemporary



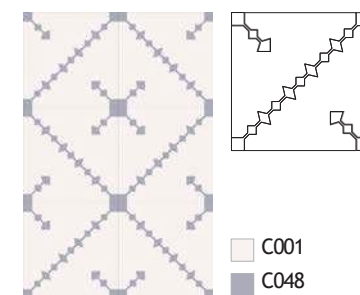
8274
Contemporary



8275
Contemporary



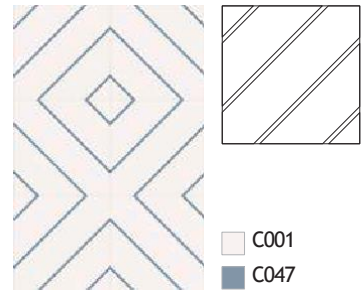
8132
Contemporary



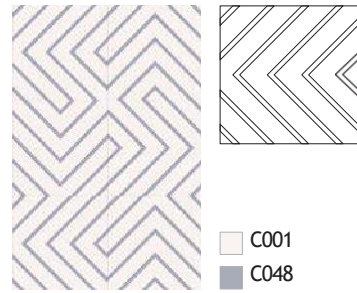
8101
Contemporary

There may be some variation in the colours of the actual product. Drawings not to scale. Tiles are handmade, shade variation can be expected.

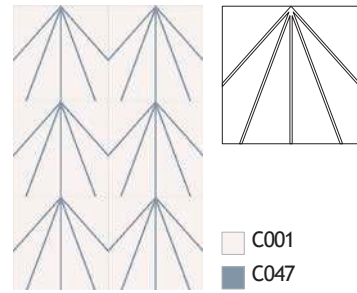
255 x 255 mm—Pattern Tiles



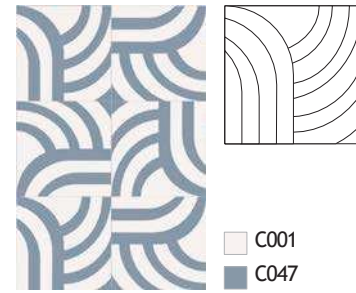
8333
Geometric



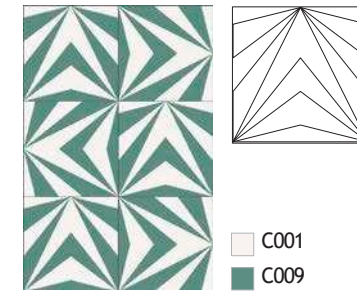
8299
Geometric



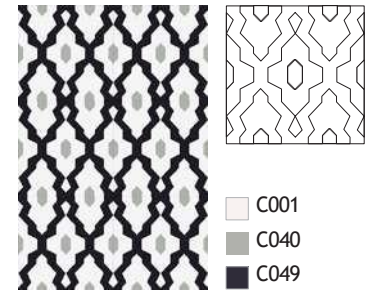
8284
Geometric



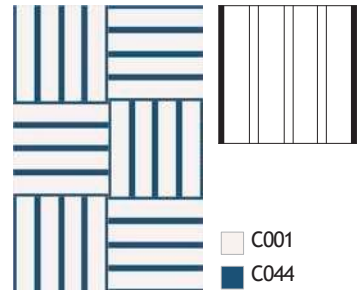
8232
Contemporary



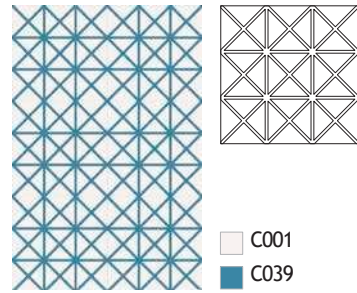
8230
Contemporary



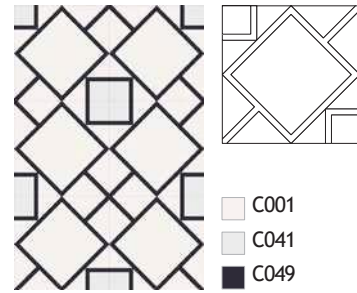
8231
Contemporary



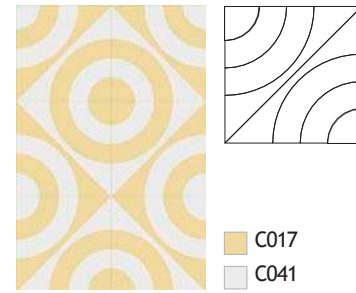
8318
Geometric



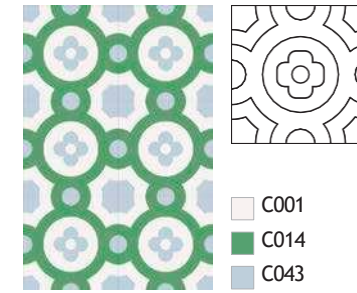
8306
Geometric



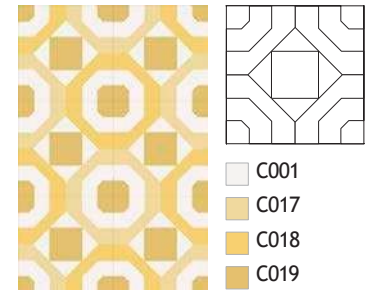
8149
Geometric



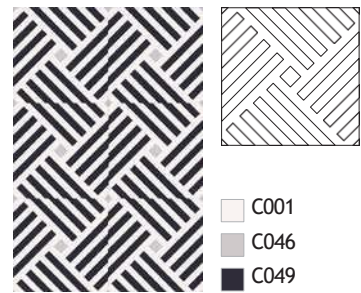
8135
Contemporary



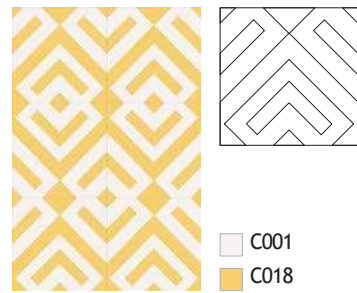
8179
Contemporary



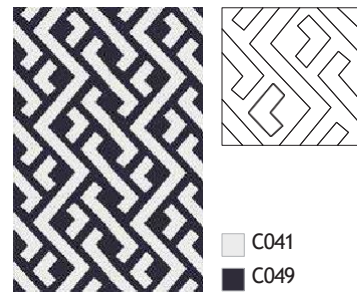
8166
Contemporary



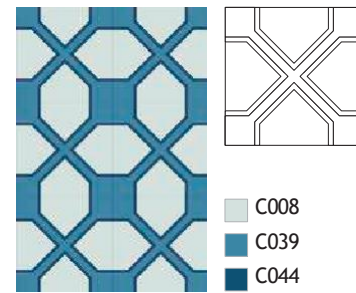
8335
Contemporary



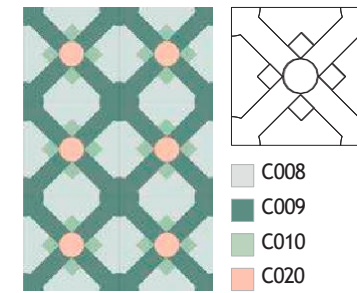
8264
Contemporary



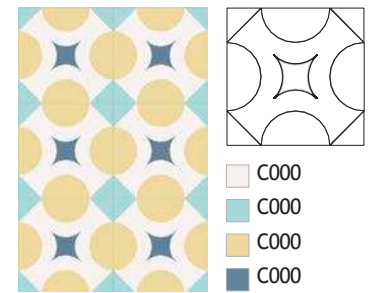
8325
Contemporary



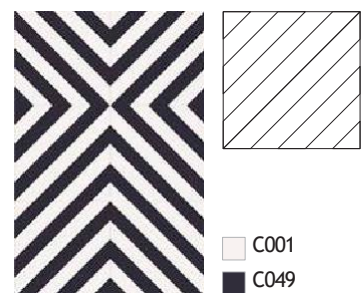
8319
Contemporary



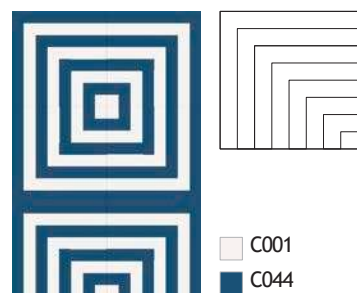
8124
Contemporary



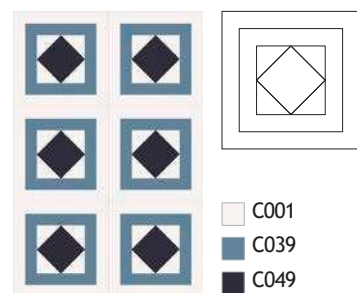
8121
Contemporary



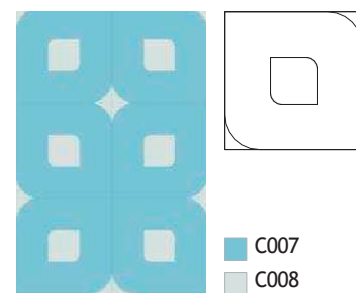
8262
Geometric



8329
Geometric



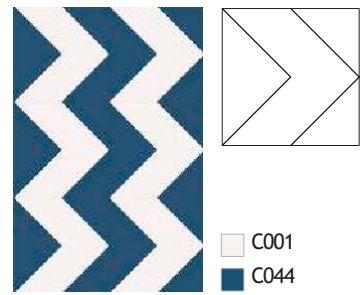
8120
Geometric



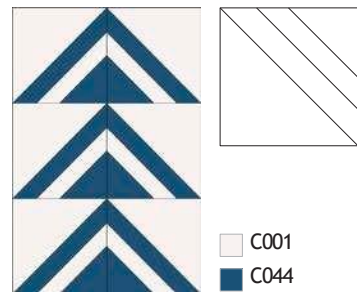
8336
Contemporary

There may be some variation in the colours of the actual product.
Drawings not to scale.
Tiles are handmade, shade variation can be expected.

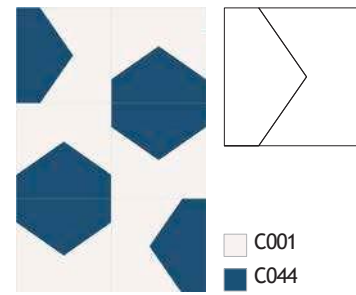
255 x 255 mm—Pattern Tiles



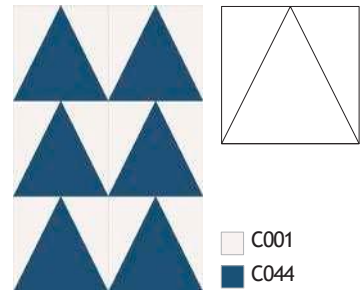
8212
Geometric



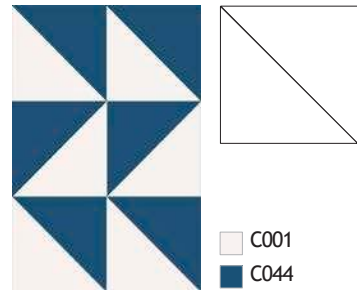
8619
Geometric



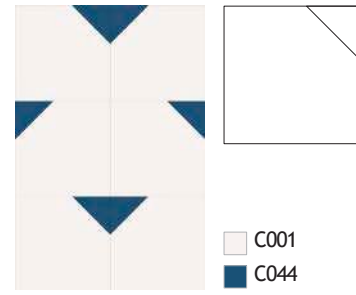
8250
Geometric



8285
Geometric

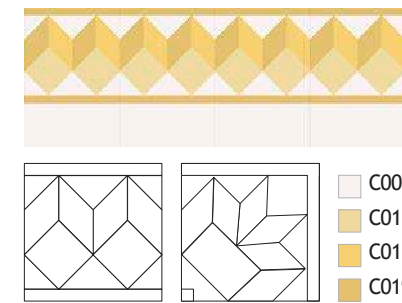


8282
Geometric

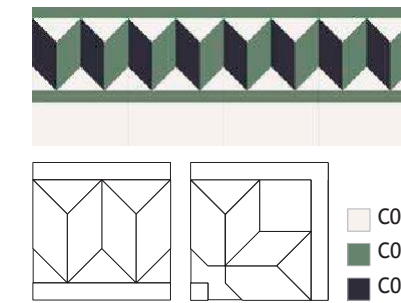


8312
Geometric

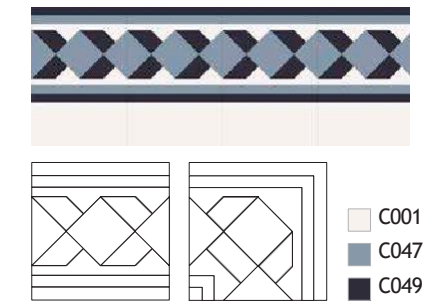
BORDERS / skirting 255 x 127 mm —Pattern Tiles



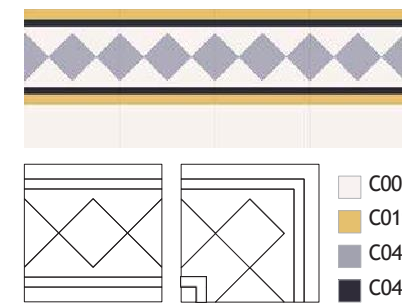
8007



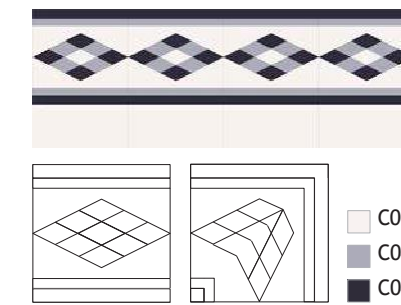
8002



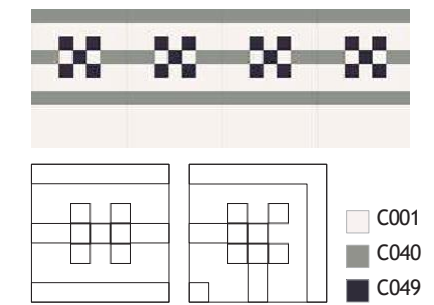
8028



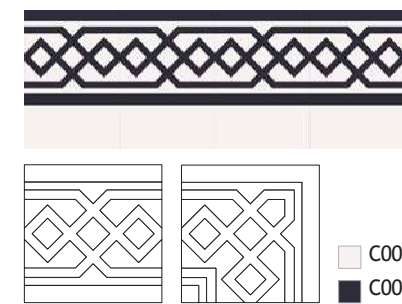
8006



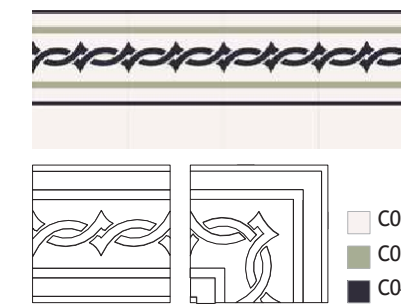
8066



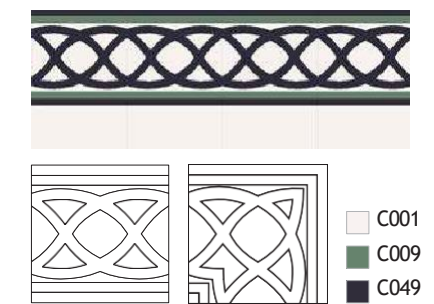
8065



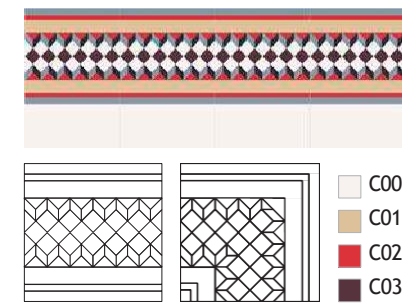
8064



8025



8016



8057

YirehMex Athangudi tiles - Skirting

+91 9080581547

There may be some variation in the colours of the actual product.
Drawings not to scale.
Tiles are handmade, shade variation can be expected.

INSTALLATION & MAINTENANCE

Please note these tips are guides only and should be used in addition to the relevant industry standards for encaustic cement tiles. Note that installation may vary from site to site with varying conditions experienced on site. The contractor and specifier should decide if these suggestions are suitable for their application or require further adjustment.



TILE UNDERSTANDING

Shade Variation

These are hand-crafted products and so there will, of course, be some variations in colour tone and natural character that make them unique. Shade variation is inherent in encaustic cement tiles and certain tiles will show greater variation within their lots.



TILE PREPARATION

Meticulously plan your layout. The time you take for preparation and placement will greatly impact the finished result.

- Prior to the installation allow tiles to season in their final environment.
- Pre-sort your tiles so you can distribute the range of variation throughout the installation.
- Blending is recommended.
- Inspect each tile deformities that make its use inappropriate for the application intended.
- Both sides of the tiles should be wiped cleaned of any dust before installation.
- The tiles can be cut using a diamond-blade (ideally a water-cooled machine).

OPTIONAL

Before installation, once the tiles are perfectly dust cleaned apply two coats of an impregnating sealant with a wide brush or roller.



TILE LAYING

Proper substrate preparation and the right choice of adhesives and grouts for the type of tile and specific project conditions are critical for achieving a long-lasting installation.

Laying General Methods:

1. Prepare the surface. Cement tiles must be installed on a well leveled, clean and dry surface. Humid subsoil will cause fur deposits on the tile's surface.

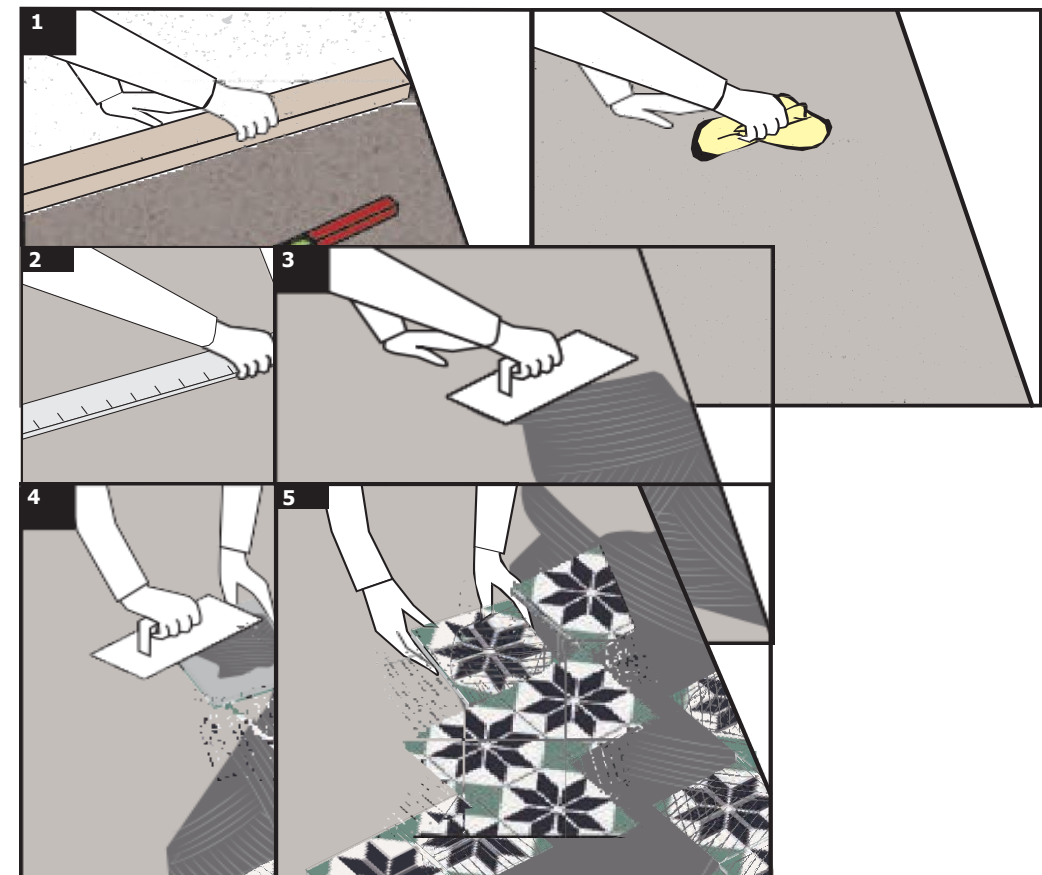
2. Determine the layout and mark the surface. For aesthetic and technical optimisation, define starting points and cuttings.

3. Apply the proper tile adhesive. Use a large-toothed trowel to spread the adhesive.

4. Back butter tiles. Apply adhesive on the back of the tile using a large-toothed trowel.

5. Install the tiles. Lay the tiles and press into place using your hands leaving a thin gap (1 or 2 mm) for the joint.

Ensure tiles are completely level throughout the installation, as unevenness cannot be rectified later.



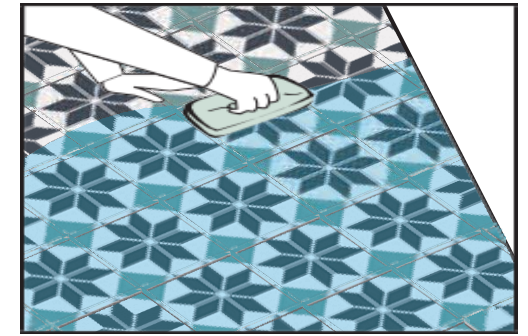
INSTALLATION & MAINTENANCE



TILE SURFACE PREPARATION BEFORE SEALING AND GROUTING

Once the adhesive is dry, clean the surface by scrubbing it using a diluted solution of alkaline cleaner and rinse with warm water. It will remove any dust and dirt that may have accumulated during the installation process, eliminating as well the thin layer of pigmented dust that can still cover the tiles.

Tiles should then be allowed to set for 24 hours before applying sealant and grout.



TILE SEALING BEFORE GROUTING

An impregnating sealing is an essential step in protecting the beauty and ensuring the longevity of cement tiles, as it accentuates the appearance and helps to protect against fading and staining.

The sealant is a solvent based liquid that limits water and oil penetration. It impregnates the tile, protects it and keeps its natural matt aspect.

Apply with a brush or a roller on a dry and clean surface. This should be applied in successive applications until the tile is fully saturated. Saturation has been achieved when an even layer of sealant is still visible on the surface after 30 minutes.

Do not apply too much. The excess would leave glistening stains on the surface (brush traces).

Always try the sealer on a loose tile before applying it on the entire surface in order to measure the grade of absorption of the tiles.



TILE GROUTING

It is recommended to use a non-pigmented, flexible, cementitious grout compound suitable for the application of cement tiles. Pigments from the joint might stain the tiles irreversibly.

Grouting General Methods:

1. Seal the tiles. Always ensure that surfaces are properly sealed before grouting.

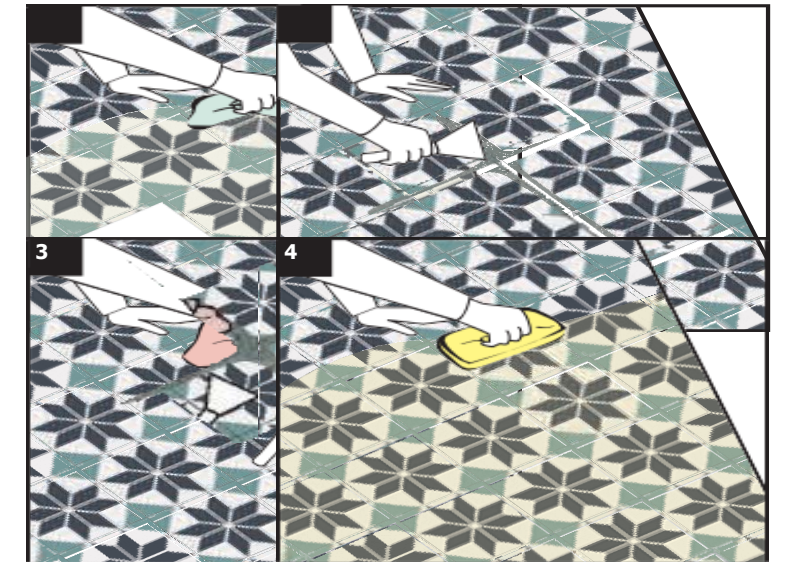
In order to prevent the soiling or staining, a proper sealant must be applied, so that the grout residues do not get deeply adhered to the tiles layer of pigments and these can be removed easily.

2. Grout the joints. Fill the gap between the tiles using a spatula, without spreading the grout on tiles.

3. Remove excess. Clean the excess grout immediately, using a damp cloth. Do not use chemical cleaners.

4. Clean the floor. Remove any cement residue stains immediately, using a pH neutral cleaner.

Never use cement remover, strong detergents or bleach as these will damage the tiles. Stains or spots can be delicately removed with a scouring pad or fine-grained sandpaper.



INSTALLATION & MAINTENANCE



FINISHING AFTER GROUTING

The finishing completes the protection against wear and dirt.

Always apply a final coat of impregnating sealant making sure to cover the grout joints as well.

Further to the above you can also apply a surface wax. This will offer extra protection and give an attractive patina.

For larger surfaces or high traffic floor (bars, restaurants and other public spaces), a special protection and attention on a daily maintenance is recommended. Using a polishing machine may accelerate the process and protect the entire floor evenly.



MAINTENANCE

Keep the surface as free as possible of loose dust and grit with regular vacuuming or sweeping. This will reduce the sandpaper effect of dirt getting compacted into the surface and joints.

Wash the floor using a pH neutral cleaner (ideally biodegradable and environment friendly) to remove the dirt that a vacuum won't pick up and for hygiene purposes.

We strongly recommend avoiding the use of bleach based cleaners, washing-up liquids or any other acid cleaners.

FREQUENTLY ASKED QUESTIONS

PRODUCT UNDERSTANDING

ARE CEMENT TILES A GREEN MATERIAL?

Cement Tiles are truly a green material.

During the production of cement tiles no heating is involved, as the tiles are not kiln-fired but left to dry in fresh air for 21 to 28 days and the materials used are environmentally friendly and sustainable, just like many centuries ago. That's why more and more professional designers and consumers like to use cement tiles as a high quality and decorative element.

WHAT EXACTLY IS THE CEMENT TILE CURE?

After pressing, encaustic cement tiles are soaked in water to ensure proper hydration for curing.

Like structural concrete, cement tiles cures and hardens chemically over time. It is not that the cement dries, but that it goes through hydration and carbonation (chemical reactions that converts the calcium oxide in the Portland cement to calcium hydroxide, and eventually calcium carbonate). It takes about 4 weeks for the cement to reach 90% of its potential strength, and it will continue to gain strength for decades.

DO COLOURS VARY OVER TIME?

The tile colour will change slightly as the cement cures, and will be affected again when sealed. Tiles may also fade in the sunlight and rain.

BESPOKE & CUSTOMISATION

CAN I CUSTOMISE A PRODUCT?

Yes, we are happy to produce custom colours and sizes to best fit your project, although there are limitations to what we can achieve in concrete.

CAN I USE MY OWN DESIGN?

Yes, you absolutely can. There are additional development charges and set-up fees applied to bespoke orders.

PLACING AN ORDER

CAN I BUY ONLINE?

We are not prepared to sell directly through our website. For ordering tiles, custom requests, pricing, lead times or other needs please email or call us so one of our Consultants can offer personal assistance.

DO YOU SHIP INTERNATIONALLY?

We have successfully supplied tiles for projects all over the world. We are happy to provide a shipping quote for international orders.

DO YOU HAVE ANY TILES IN STOCK?

Yes, we have. Although we mainly produce to order, we have a selection of stock available. Please request our weekly Stock Catalogue.

CAN I GET SAMPLES?

Yes, we understand the importance of coordinating all the elements for your project and are happy to provide samples during your selection process.

SHOULD I ORDER EXTRA TILES?

Yes, we advise a 10% contingency on top of the minimum quantity needed. This overage allows for the possibility of breakage during installation, for greater range selection and extras in case of damage in the future. Always refer to your installer when determining quantities.

SHOULD I PAID ANY ADVANCE PAYMENTS?

Yes, Once you confirmed your selection of tiles you must paid advance at least 15-20%.

HOW LONG SHOULD BE WAITED TO GET THE TILES AFTER THE ORDER?

20 to 40 days depending on how much sqft tiles you've been order.

FREQUENTLY ASKED QUESTIONS

How much wastage should I consider buying extra?

Generally, it is a standard practice to add 10-12% extra to the actual measurements. Sometime recommended to add more if installing tile in diagonal or herringbone pattern.

What is the warranty on this tile?

We at MYTYLES sell only premium quality material. So, any complaint on the material please raise the complaint before installation. Our company will take immediate action to resolve the problem. No complaints will be entertained once installation is done. Please note: For damage complaint please raise immediately once material is received. Kindly refer to the damage policy.

What if I receive the broken tiles?

We request you to check and receive the material. In case any broken tiles please raise the complaints to us immediately. Damaged tiles will be replaced at the earliest. Please note - Tiles are fragile in nature. So as per the company standard a maximum damage of 2-3% may happen during transit and handling. Anything above 3% will be immediately replaced.

How is the quality of this product?

This product is of PREMIUM quality.

Can I do Return/Exchange this product?

Sorry, there is no Return/Exchange allowed for this product. We request you to check the design and measurements properly before placing the order. In case a different material supplied than ordered then our company will immediately change it.

■ INSTALLATION & MAINTENANCE

CAN ATHANGUDI TILES BE INSTALLED OUTDOORS?

There are several considerations in regards exterior using of Athangudi Tiles. First, tiles may experience some cracking if installed in an environment with freeze conditions. A second consideration for outdoor installations is sun exposure. The tile colour may diminish with UV exposure, especially blue and green pigments. Furthermore, if you want to keep a glossy, perfect finish, we do not generally recommend them for outdoor use.

CAN I INSTALL YOUR TILES ON THE KITCHEN / BATHROOM BACKSPLASH?

We do not generally recommend them for use. because should not clean or remove the stains by a heavy chemical. unless should use be used water or light chemicals.

CAN ATHANGUDI TILES BE USED WITH RADIANT HEAT FLOORS?

Yes, Athangudi cement tiles have excellent thermal mass and are sublime with a radiant heat floor. When installing over radiant heat, we suggest a larger grout joint (3-4 mm) instead of the small grout joint (1-2 mm) we normally recommend. Also, the grout material should be flexible. This will allow for some natural expansion/contraction of the heated floor without cracking the tiles.

WHAT SIZE DO YOU SUGGEST FOR GROUT SPACING?

YirehMex Athangudi Tiles are sized to accommodate a 1 to 2 mm grout space, a much tighter grout joint than is typical with ceramic tiles, so the visual effect is more like a carpet. Many factors determine the size of a grout joint. It is important to discuss it with both your architect and installer.

ARE YIREHMEX ATHANGUDI CEMENT TILES PRE-SEALED?

We always send our tiles in a natural state, therefore its not pre sealed.

DO I NEED TO SEAL THE ATHANGUDI CEMENT TILES?

No. Sealing is not essential to protecting the beauty and ensuring the longevity of tiles. Because the colour code is 4-5mm thickness.

WILL THE TILE BE STAINED BY WINE OR ACIDS?

Soda, wine, acids, etc. should not be left to sit on the tile as they will eventually eat through the sealer and stain the tile.

HOW DO I MAINTAIN MY ATHANGUDI CEMENT TILES?

The tiles should be cleaned with pH-neutral soap and water. Do not use any acids on these tiles.

TERMS & CONDITIONS

YMEX Materials products are available worldwide through direct from us.

PLACING ORDERS

Please order carefully.

- Check the product specification. Samples may be requested.
- Check the quantities. Ordering proper quantities is essential, as we cannot guarantee an exact match between batches. We recommend ordering 10% extra tiles.
- Check delivery requirements and delivery costs.
- Once production has begun, orders cannot be cancelled.
- There is a 3 sqm minimum order per reference.

PRICES

- Prices are subject to change without notice according to cost variations.
- All product prices quoted exclude the cost of delivery and taxes.
- VAT rate is 23%.

DELIVERY

- We can arrange delivery anywhere in the world. Please contact us to request a freight quote.
- Tiles are packed in cardboard boxes, loaded on a protected and sealed pallet. Pallets are delivered on the pavement.
- Freight quotes are passed on at cost with a 15€ pallet charge per pallet used.
- Delivery terms are to be considered indicative. Eventual delivery delays do not entitle customers to claim indemnity.

PAYMENT TERMS

- A 50% deposit is required to confirm your order.
- The balance is due before order released. The goods will be released immediately after the payment has been received and cleared in full.

LEAD TIMES

Nearly every YMEX Cement Tiles product is made to order. Our lead times vary from product to product and may also be extended at certain times of the year. Nevertheless, we try to follow these timelines:

- In-stock tiles: 1 week to ship.
- Made to order tiles: 6 weeks to ship.
- Exceptionally large quantities: quoted on an individual basis.

All lead times will be quoted on purchase order. Please contact us for stock checks.

TOLERANCE TO DIMENSIONS AND SHADES

- Tiles are referred to its nominal size, not its actual size. Due to the handcrafted nature of our products, dimensions are approximate and may be subject to a degree of inaccuracy.
- A possible variation in shades is considered as a particularity of such products. Tiles may exhibit variations from samples and within a shipped lot.

TERMS & CONDITIONS

CUSTOM PROJECTS

Please inquire us about custom developments.

- Custom projects are priced accordingly.
 - Custom sizes, patterns and colours are available for an additional charge.
-

RETURNS

Please order carefully as we cannot accept returns. Please check your products carefully on delivery.

- Any problems with quality, quantity and kind of material supplied must be reported to within 7 working days of receipt of the order.
- In case of claim the buyer should put the disputed material at NEW TILES ´s disposal for any defect checking. No claim will be accepted once the material has been installed.
- Damage caused by inappropriate installation, accident, misuse or improper maintenance is not covered by NEW TILES TA products warranty.
- Variations in colour, shade and tonality are inherent characteristics of YMX Cement Tiles and are not defects.
- Variations in facial dimensions and thickness will be allowed as per handmade products standards.



YIREHMEX ATHANGUDI TILES

No 433, Mahalakshmi nagar, Chockalingampudur Post, Athangudi via, Karaikudi taluk, Sivagangai dist, TamilNadu, India. Pin 630101

CELL: +919080581547, Email: yirehmex@gmail.com, Website: www.yirehmex.com

© 2023 YirehMex. All rights reserved.

YirehMex Athangudi Tiles. is the owner of the artistic works published herein. No artistic work forming part of this publication may be reproduced in any form or by electronic or mechanical means without the permission in writing of the copyright owner.